



Disable Protocol



Last Updated: 22nd May 2008
Author: James Evans (BIE P&S Product Planning)

Contents

1: Basic overview.....	1
2: IP Filter at work.....	2
3: How to configure.....	2
3.1: <i>Configuring IP Filter through the Embedded Web Server</i>	2
3.2: <i>Configuring IP Filter through BRAdmin Professional 3</i>	2

1: Basic overview

Prevent unwanted access to your Brother print devices by restricting who is able to print to them by simply blocking their IP (Internet Protocol) addresses.

IP addresses are used in most network environments as a way of identifying network equipment, such as printers, PC's and laptops. They also enable network equipment to communicate with each other. Chances are, if you are using a networked computer right now, it will more than likely have an IP address.

Brother's IP filter feature allows systems administrators to block or grant exclusive access to selected IP addresses. This can potentially save money on print costs as well as unnecessary ware and tare to their Brother equipment.

2: IP Filter at work

A large university uses over 100 Brother print and multifunction devices within its campuses. A small percentage of these devices are allocated for staff use only but are connected to the same network as the devices that the students use.

IP filter enables the universities IT administrator to block the students from being able to print to these selected devices, thus keeping them for staff use only.

3: How to configure

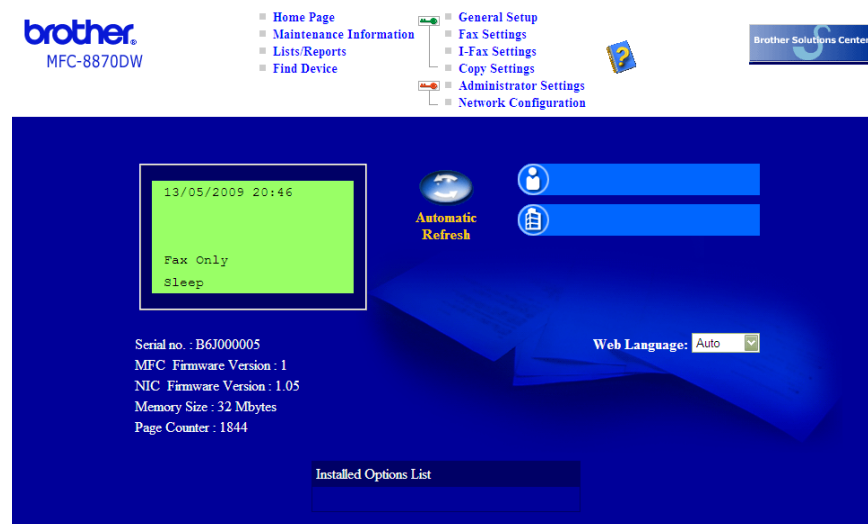
There are two common ways to configure IP filter.

1. Using the Embedded Web Server (EWS)
2. Using BRAdmin

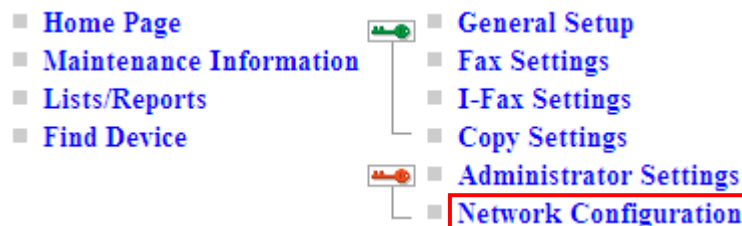
Please note that these instructions show you how to configure IP filter on an MFC-8870DW

3.1: Configuring IP Filter through the Embedded Web Server

Step 1: Log onto your Brother print device through your web browser



Step 2: Click on 'Network-Configuration' from list of options



Step 3: Click 'Configure TCP/IP'

Network Configuration

[Wired](#) [Wireless](#)

Ethernet 10/100BASE-TX (Active)

Node Type: NC-6400h
Node Name: [BIEMF017](#)
Firmware Version: 1.05
Ethernet Address: 00-80-77-90-35-92

[Configure TCP/IP](#) [Configure NetBIOS](#)

[Configure POP3/SMTP](#) [Configure IPP](#)
 [Configure FTP](#) [Configure Telnet](#)
 [Configure SNMP](#) [Configure Web Server](#)
 [Configure mDNS](#) [Configure LDAP](#)

Step 4: Click 'Configure IPv4 Filter'

Configure TCP/IP (Wired)

TCP/IP Enable Disable

IP Address

Subnet Mask

Gateway

Boot Method ▾
 Enable APIPA

[Advanced settings](#)

[Configure IPv6](#)

[Configure IPv4 Filter](#)

Step 5: Configure your IP filter (you can specify up to 20 filters)

1. Enable IP filter by placing a tick in this tick box

2. Enter the administrators IP address here. This is required so that their print jobs are not rejected should their IP address be within a specified range of rejected addresses.

3. Decide if you want your IP filter to either reject or accept the addresses you specify

4. Enter your filtered IP addresses in here. If you want to stop everybody whose IP address starts 10.2.2 then you can simply enter 10.2.2.0. The '0' at the end represents every IP address on the 10.2.2 network.

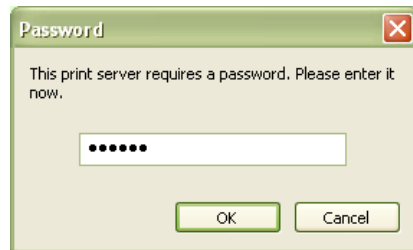
Step 6: When you have completed your IP filter, click the 'Submit' button.

3.2: Configuring IP Filter through BRAdmin Professional 3

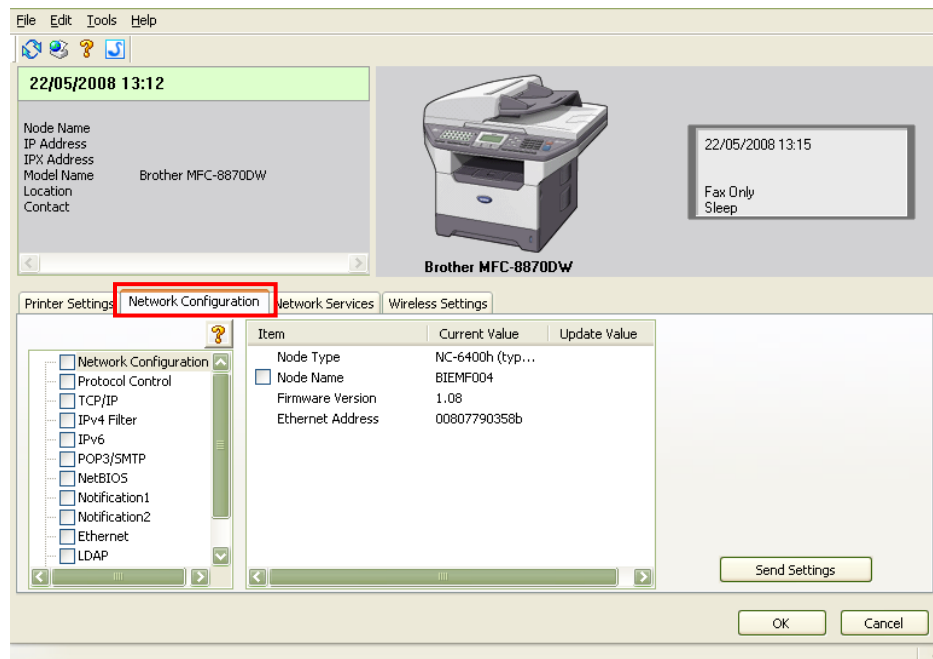
Step 1: Find the device you want to configure and double-click it (in this example the device is a Brother MFC-8870D).

Model Name	Device Status	IP Address
Brother MFC-9420CN	01/09 22:57 Fax Res:Standard	10.2.66
Brother MFC-8870DW	14/05/2009 17:07	10.2.66
Brother MFC-9440CN	22/05 13:09 Fax Sleep	10.2.66
Brother MFC-9420CN	22/05 13:11 Fax Sleep	10.3.66
Brother MFC-7820N	22/05 13:11 Fax Sleep	10.3.66
Brother MFC-9420CN	22/05 13:14 Fax Sleep	10.3.66

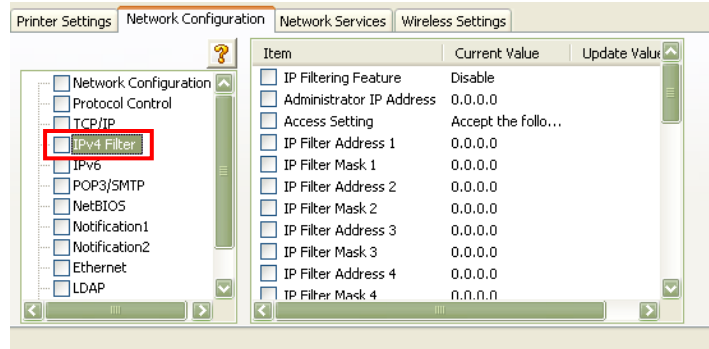
Step 2: Enter the password of your device when requested



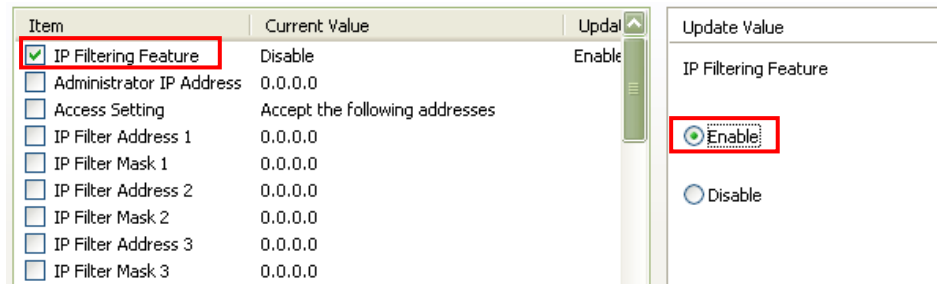
Step 3: Click on the 'Network Configuration' tab



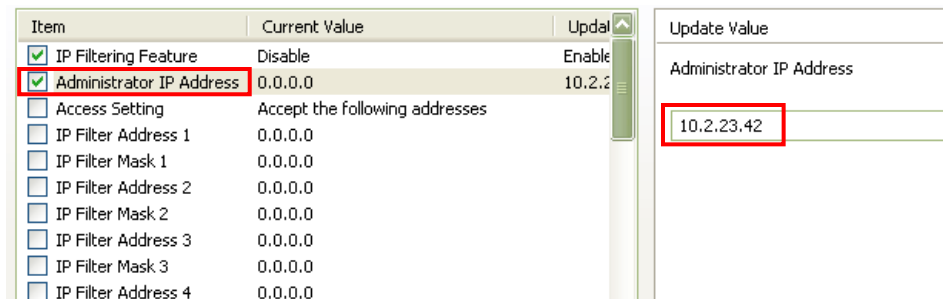
Step 4: Click on 'IPv4 Filter'



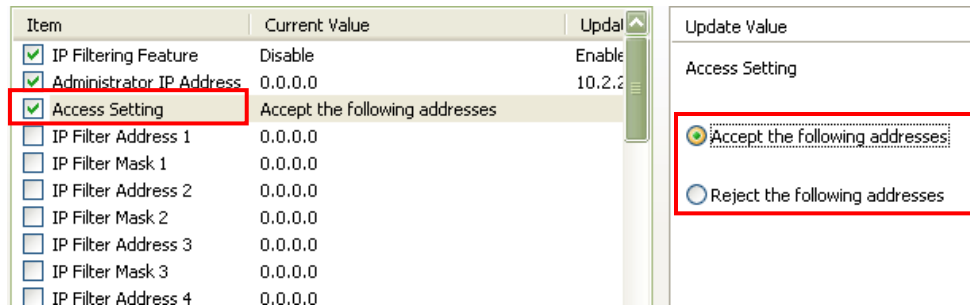
Step 5: Click on 'IP Filter Feature' and enable it



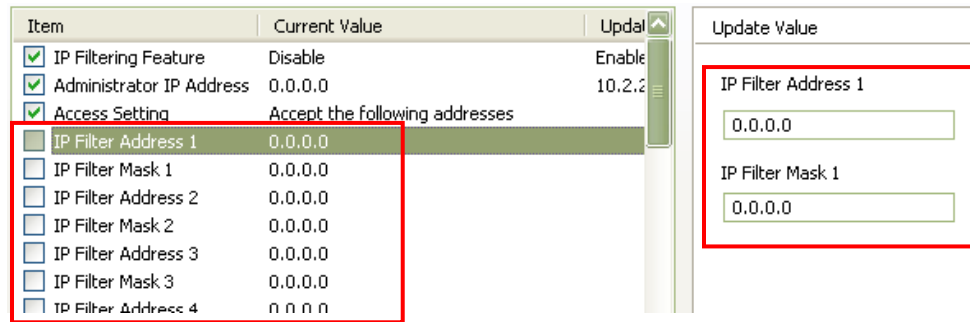
Step 6: Click on 'Administrator' and enter the administrators IP address (this is so that any print jobs sent by the administrator are not rejected should their IP address be within a specified range of rejected addresses).



Step 7: Decide if you want your IP filter to either reject or accept the addresses you specify



Step 8: Configure your IP filter (you can specify up to 20 filters). If you want to stop everybody whose IP address starts 10.2.2 then you can simply enter 10.2.2.0. The '0' at the end represents every IP address on the 10.2.2 network.



Step 9: When you completed your filter, press the 'Send Settings' button. This will enable all the changes you have just made within BRAdmin.

