



## Driver Deployment Wizard

Last Updated: 14<sup>th</sup> July 2008

Author: James Evans (BIE P&S Product Planning)



### Contents

1: Basic overview.....	1
2: Benefits of using Brother's driver deployment wizard .....	2
3: Brother's driver deployment wizard in practice .....	2
4: How to use Brother's driver deployment wizard .....	2
4.1: Downloading and installing DDW under Windows® XP / Windows® Vista.....	2
4.2: Creating USB drivers for a Windows® XP / Vista PC .....	5
4.2: Creating parallel drivers for a Windows® XP / Vista PC .....	15
4.3: Creating network drivers for a Windows® XP / Vista PC (shared device - print server) .....	26
4.4: Creating network drivers for a Windows® XP / Vista PC (direct connection – peer to peer) ..	37
5: How to use a DDW created driver in up to 3 easy steps .....	48
6: Compatible operating systems .....	48

### 1: Basic overview

Brother's driver deployment wizard is a simple way to quickly and efficiently deploy customised printer, p-touch & QL drivers within your organisation for both local and network-connected devices. It works by assembling all the files associated with an original driver and converts them into a single small executable file, which can be installed through one simple double-click of a mouse. There are no complex menus or tricky questions - the one-click process does it all.

The single file can then be sent out, via e-mail for example, to anybody who wants hassle free access to their Brother printer but have not yet installed it.

The driver deployment wizard can be downloaded completely free of charge from Brother's Solutions Centre web site, <http://solutions.brother.com>.

## 2: Benefits of using Brother's driver deployment wizard

- Enables non technical people to install advanced, customised printer drivers quickly and efficiently
- Saves time and increases overall efficiency through an organisation

## 3: Brother's driver deployment wizard in practice

Due to changes within their environmental policy, a utilities company declared that all of its staff must adopt double-sided (duplex) printing. It was the job of the IT administrator to put this into action by converting all of their 100 duplex-ready printers from single-sided to double-sided printing. This potentially meant going round over 1,000 users and manually making the changes to their printer drivers. As not all users were on the same site, the administrator worked out that this process could take up to half a week.

Thanks to Brother's driver deployment wizard the IT administrator was able to create a special file which she was able to e-mail out to each one of the 1,000 users. The process took just under 30 seconds per printer driver rather than half a week as originally estimated.

## 4: How to use Brother's driver deployment wizard

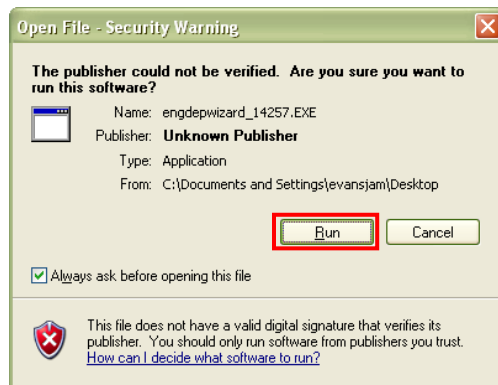
### 4.1: Downloading and installing DDW under Windows® XP / Windows® Vista

**Step 1:** Download the driver deployment wizard from Brother's Solutions Centre, <http://solutions.brother.com>

**Step 2:** Once downloaded, double-click the executable file labeled 'engdepwizard\_xxxx.exe' (xxxx being the version number which may vary from the number in the image below).

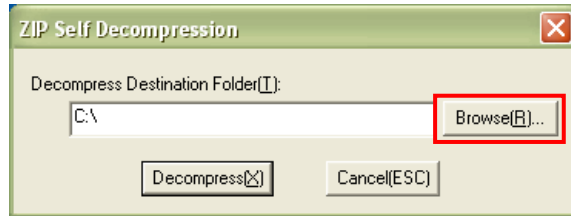


**Step 3:** If prompted to do so, click 'Run' from the warning message.

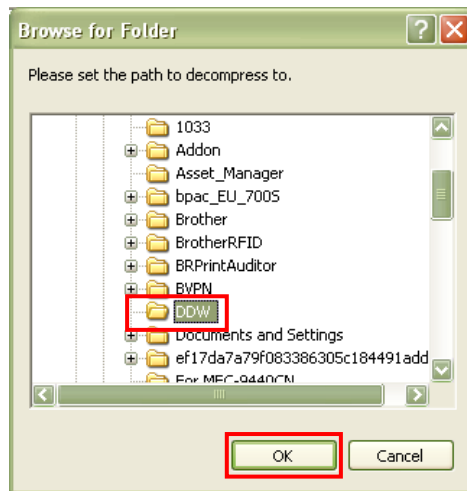


**Step 4:** Before you can begin, the installation files need to be extracted. This is because the file downloaded from the Internet is compressed (to save download speeds and web space).

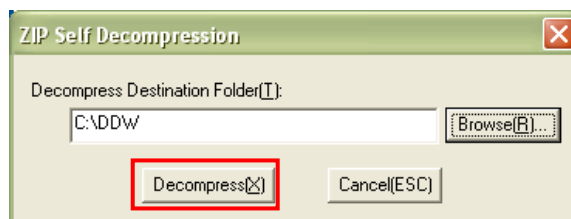
Locate an area on your computer where the compressed files can be extracted by manually typing a destination folder or by clicking '**Browse**'.



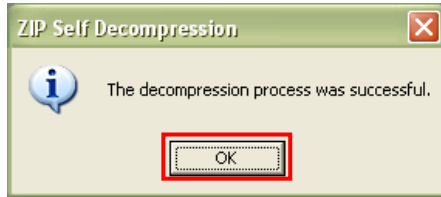
**Step 5:** If you clicked browse, locate a folder to extract the files to and then click '**OK**'. In the example below, the folder is called '**DDW**'.



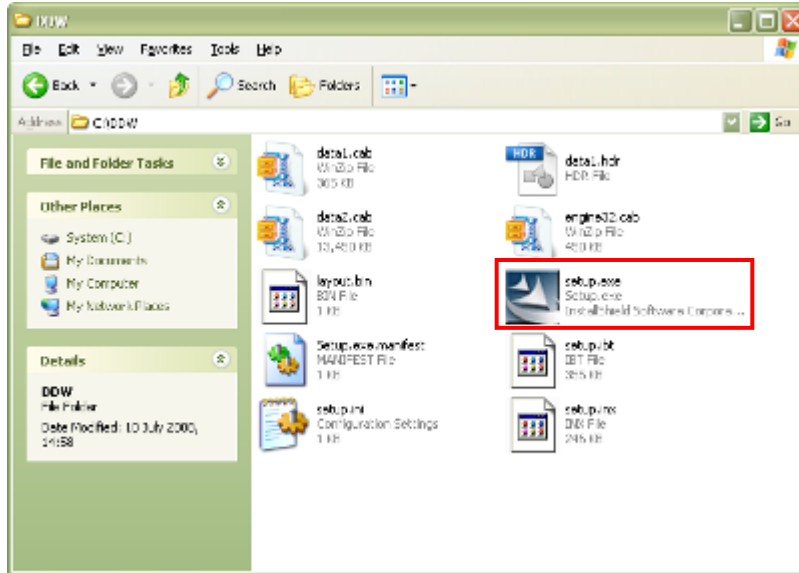
**Step 6:** You will now be returned to the main decompression window. From here, click the '**Decompress**' button.



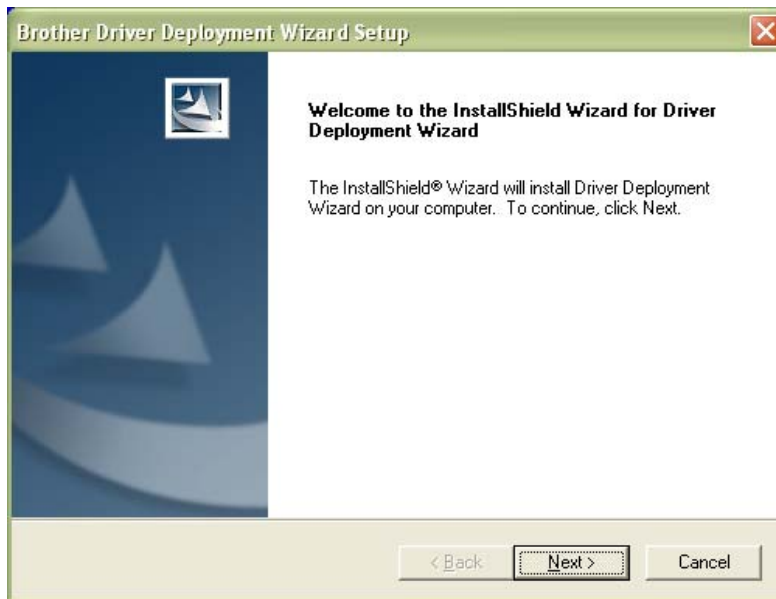
**Step 7:** When the decompression has finished, click 'OK'.



**Step 8:** Now locate the folder where you extracted the files to and double-click 'setup.exe'.



**Step 9:** Proceed through the various menus, answering each question as they are asked, until the driver deployment wizard has installed.

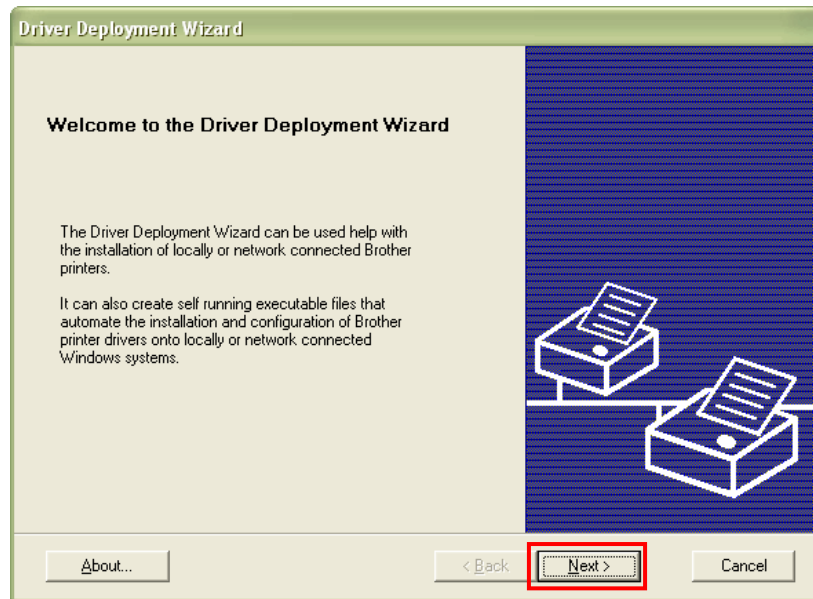


## 4.2: Creating USB drivers for a Windows® XP / Vista PC

Please note that this function is not compatible with MFC devices.

**Step 1:** Click on Windows Start Menu → Brother Personal Utilities → Brother Driver Deployment Wizard → Driver Deployment Wizard.

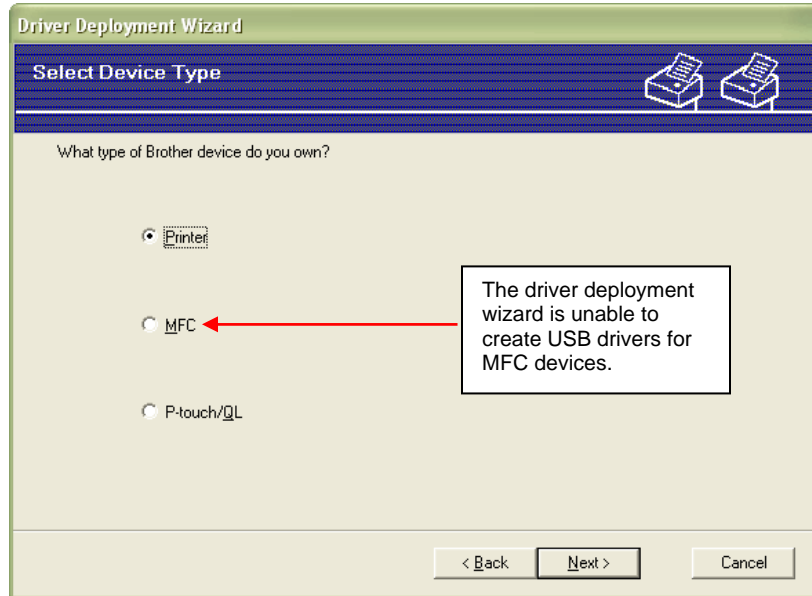
**Step 2:** The driver deployment wizard welcome screen is displayed. From here, click 'Next'.



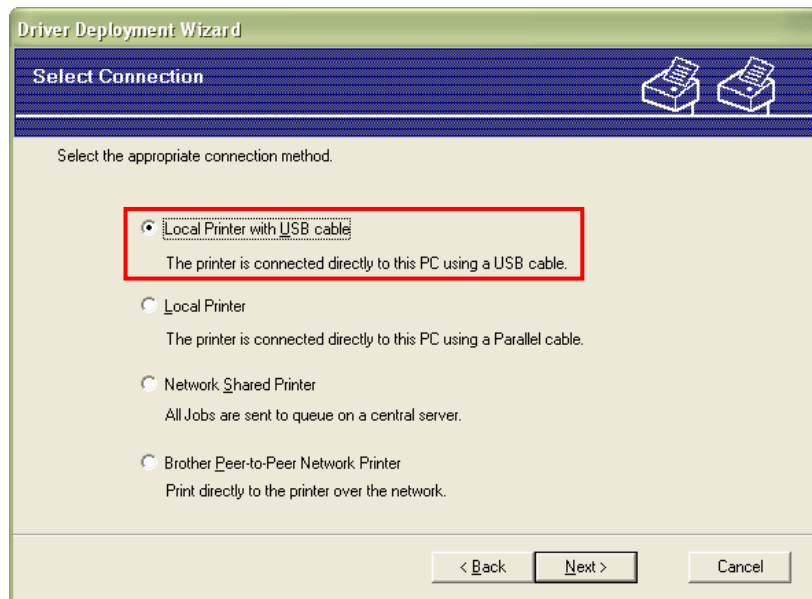
**Step 3:** Select the type of Brother device you want to create a driver for. You can select from printer or P-Touch/QL. Once you have made your selection, click **'Next'**.

If you are not sure what type of machine you have, then simply answer the following:

Does the model name of your device start with HL (e.g. HL-4040CN)? If the answer is yes then you have a printer. If not, does the model name of your device begin with fax, DCP or MFC (e.g. MFC-8870DW)? If yes, you have an MFC, which is not supported by DDW to create USB drivers. If your machine is neither of these then do you use it for only printing labels? If so, you have a P-Touch/QL.

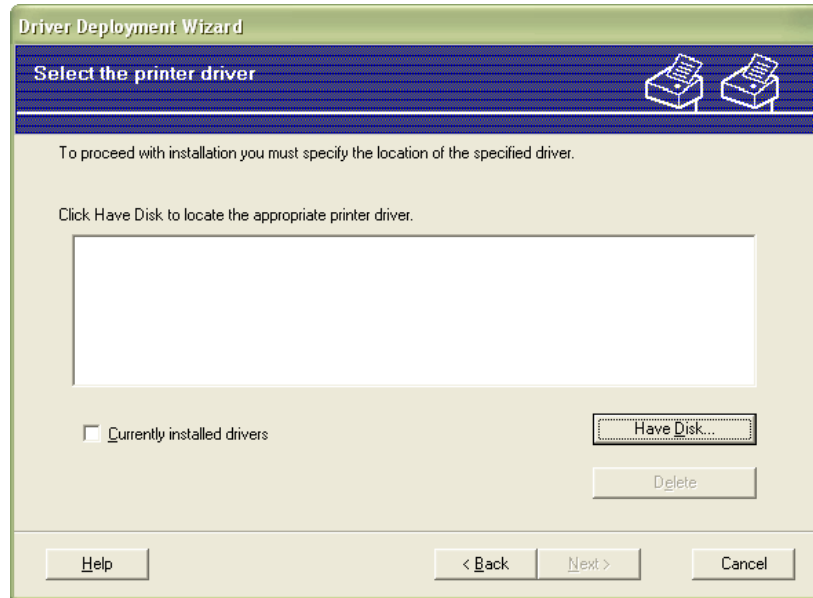


**Step 4:** Select **'Local Printer with USB connection'** then click **'Next'**.

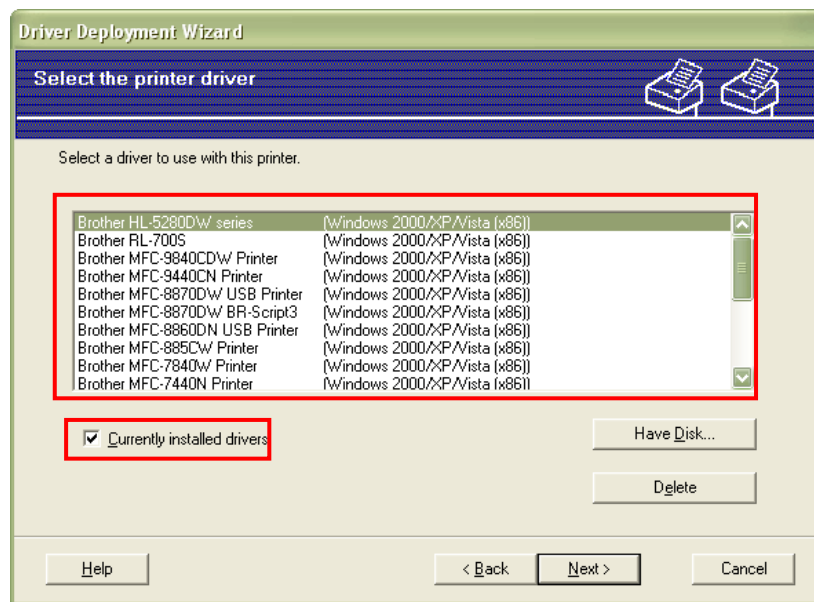


**Step 5:** You must now give the driver deployment wizard access to the necessary printer drivers. You can use drivers which are currently installed on your computer or ones that are on a disk.

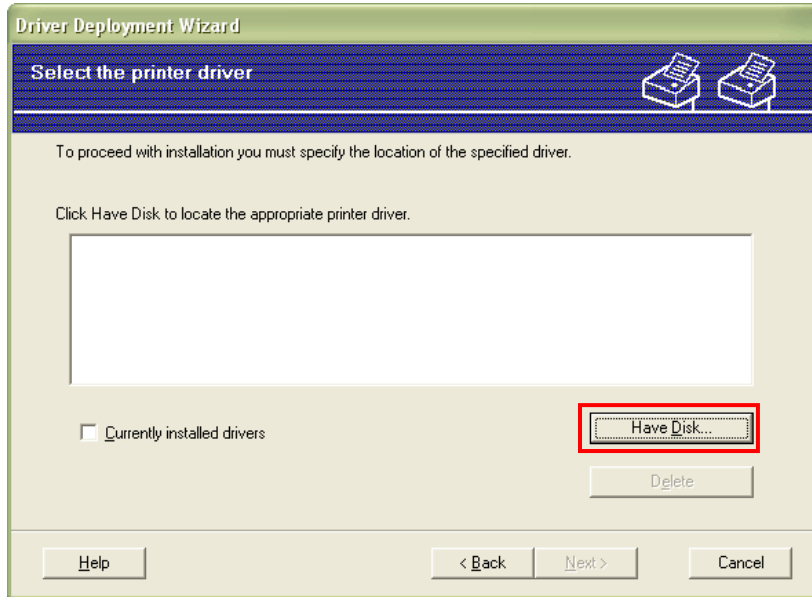
Later on, the driver deployment wizard will take these drivers and convert them into a single executable file.



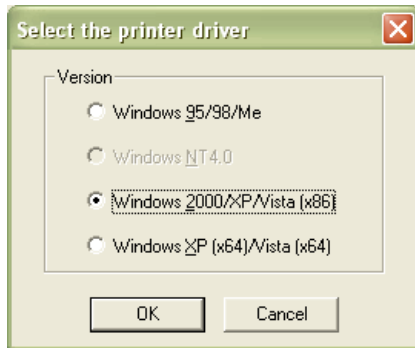
**Step 6:** If you want to use a printer driver which is not already installed go to step 7. To use drivers which are pre-installed, place a tick in the '**Currently installed drivers**' tick box and select the appropriate driver from the list. Once you have selected your driver, click the '**Next**' button and proceed to step 14 on page 11.



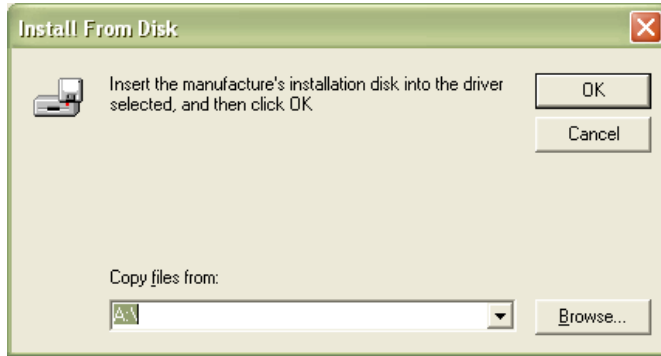
**Step 7:** To use a printer driver which is not already installed, click the **'Have Disk...'** button. Please note that if you choose this option, you will not be able to customise the driver in as much detail as you can with a driver which is pre-installed on your computer.



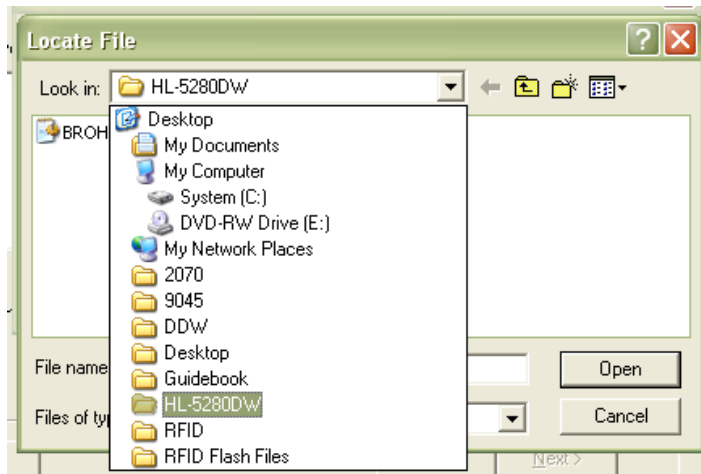
**Step 8:** Select which operating system you want to use your new printer drivers with then click **'OK'**. (This is handy if you want to roll out your driver to a computer which has a different version of Windows® than the one you are running the driver deployment wizard from).



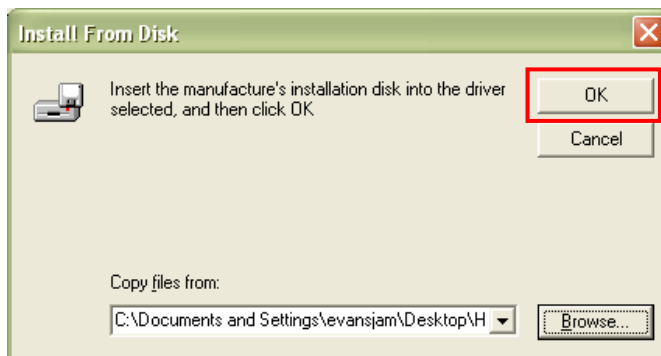
**Step 9:** Now specify where the drivers are located. You can do this by specifying the path directly into the 'Copy files from:' box or by clicking on the 'Browse' button.



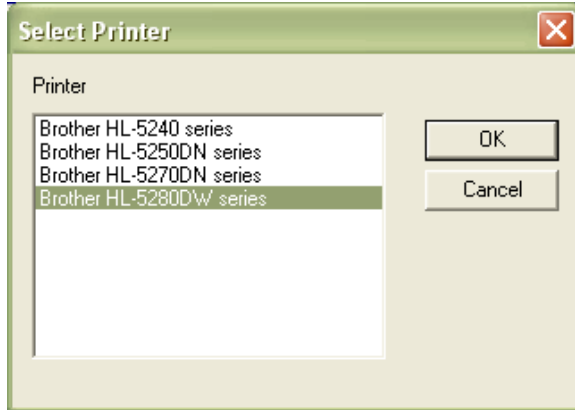
**Step 10:** If you clicked the 'Browse' button, you will be able to search your computer or other peripherals like CD-ROMS or USB memory drives.



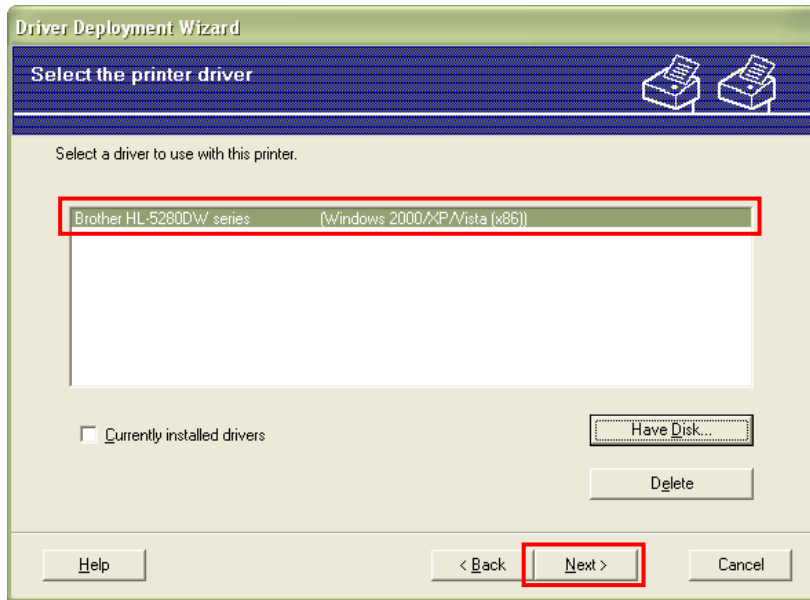
**Step 11:** Once you have found your driver, click 'OK'.



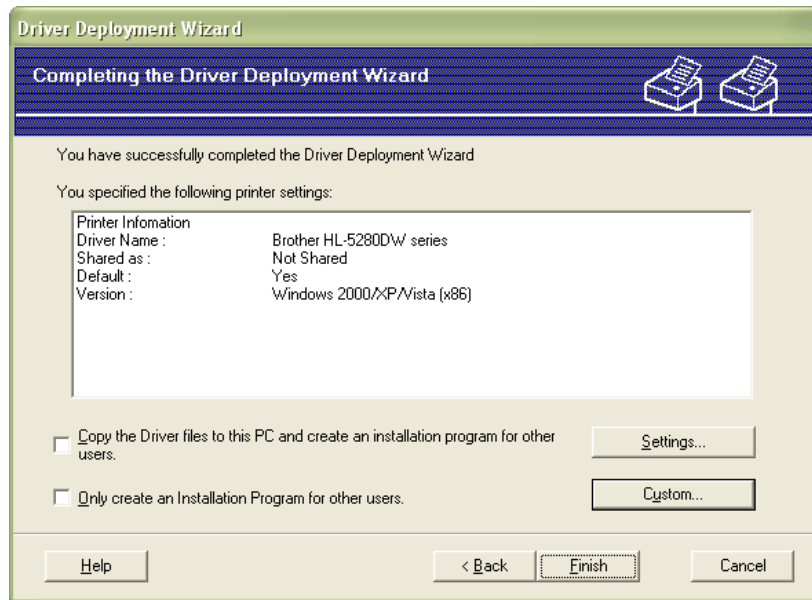
**Step 12:** Select the appropriate model name from the list then click **'OK'**.



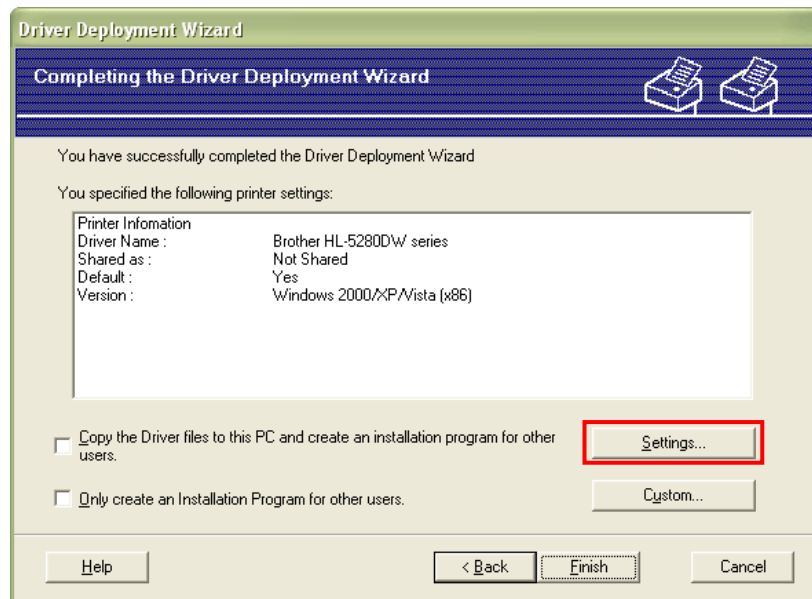
**Step 13:** Your selected driver will now appear. If it is the correct one, click **'Next'**. If the driver is incorrect, go back to step 7 on page 8.



**Step 14:** Further information about your driver will now appear along with some further options. From here you can start to customise your driver and specify how you want it to install.



**Step 15:** To apply some basic install configurations, click 'Settings'.



**Step 16:** From here, there are 4 basic configurations you can apply:

These values are for information only and cannot be changed

1. This automatically sets the installed printer as default
2. Automatically have a test page sent to the printer immediately after installation (*you must enable the 'Display USB connections instructions' first to use this*)
3. Alert the user when to insert the USB cable (*as Brother print drivers require the driver to be installed first*).
4. Automatically share the printer to other users

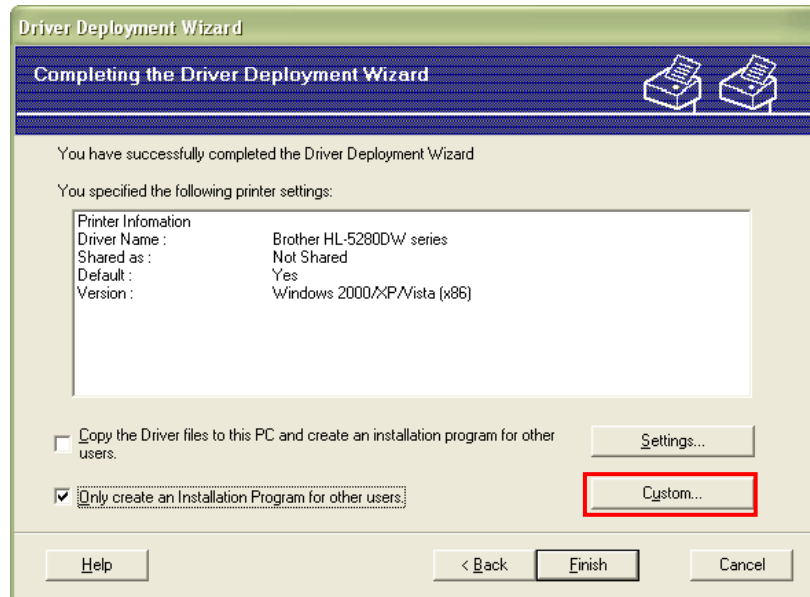
**Step 17:** Once you have finished, click 'OK'.

**Step 18:** To customise your new driver, ensure that you have ticked on one of the tick boxes, as show below.

This will create the new DDW driver and copy the files over to your PC.

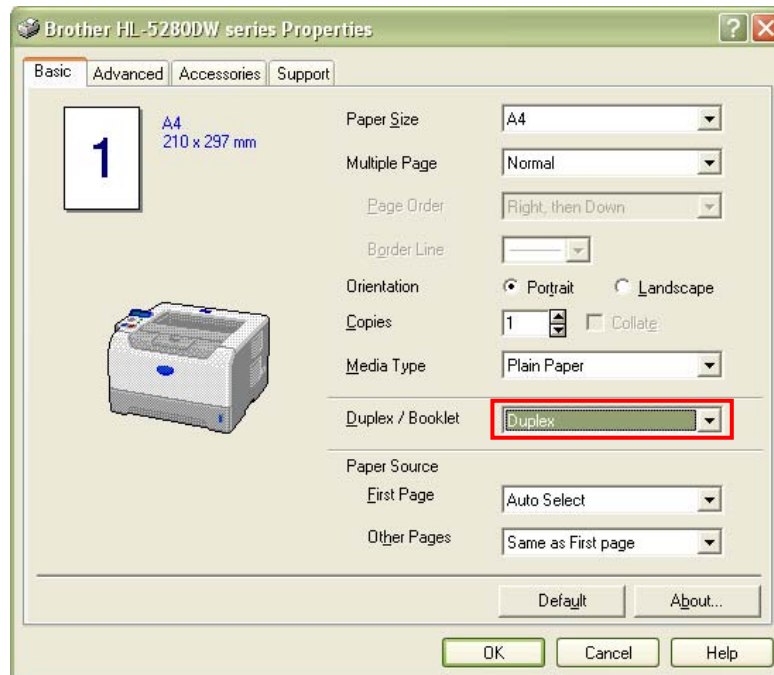
This will create the new DDW driver only.

**Step 19:** Then click **'Custom'**.



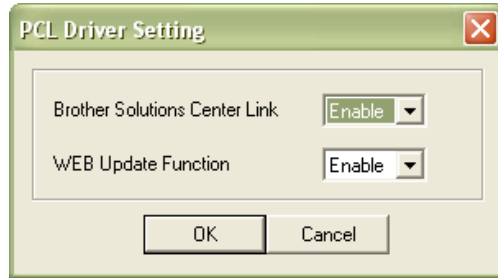
If you are creating your new driver from one which is pre-installed on your computer then you will be able to change its default settings, such as enabling double-sided (duplex) printing as standard. If the driver is not pre-installed and is on a CD for example, you will not be able to do this therefore please go proceed to step 20 on page 14.

The printer driver shown below is of a HL-5280DW. Other printer drivers and their functions will be different.



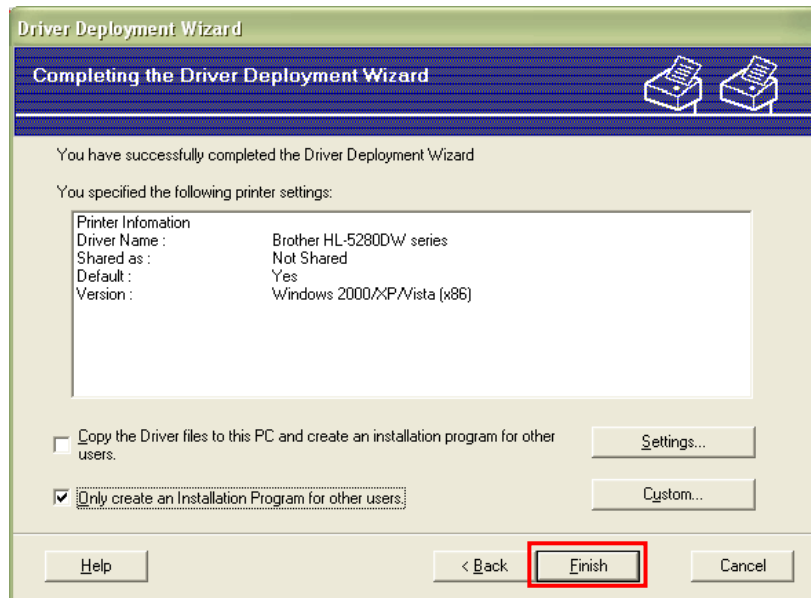
Once you have made your changes, click **'OK'**.

**Step 20:** You will now be asked if you want to make a few more changes to your new printer driver. If the driver you are working from was not pre-installed on your computer this will be the only settings you can change. *The contents of this box may vary depending on which printer you are configuring.*

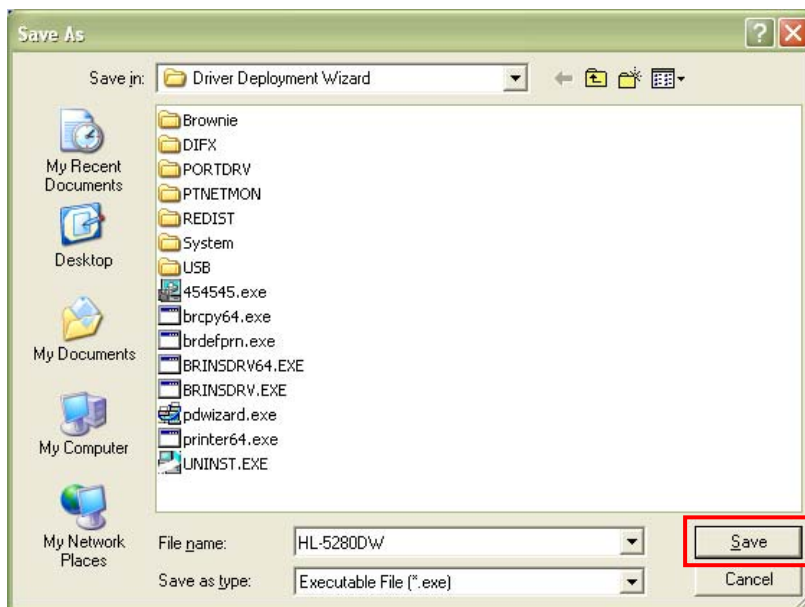


Once you have made your changes, click 'OK'.

**Step 21:** When you have made your configurations, click on 'Finish'.



**Step 22:** Give you new driver a name, select where you want it to go then click **'Save'**.



**Step 23:** Your new driver will be created. To use, simply double-click the newly created executable file and then plug in the USB cable when it has installed. That's it!

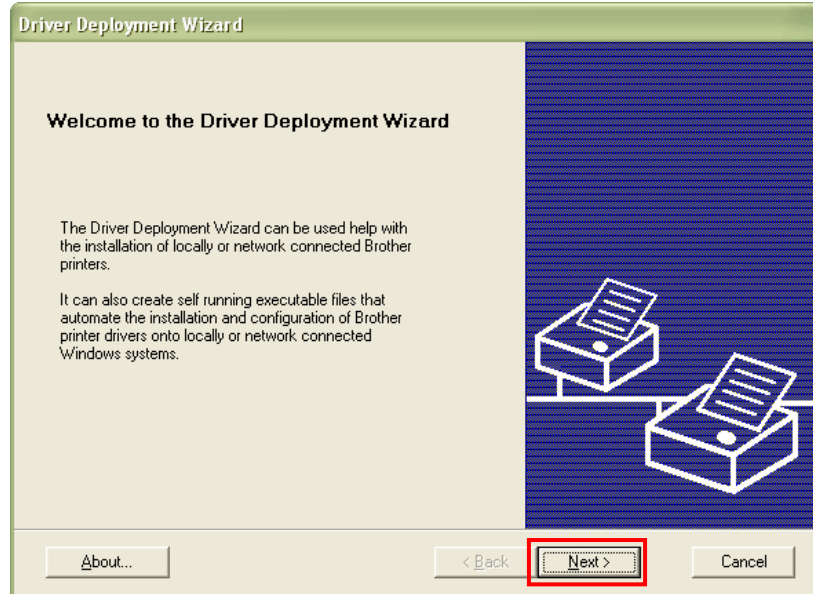


#### **4.2: Creating parallel drivers for a Windows® XP / Vista PC**

Please note that this function is not compatible with MFC devices.

**Step 1:** Click on Windows Start Menu → Brother Personal Utilities → Brother Driver Deployment Wizard → Driver Deployment Wizard.

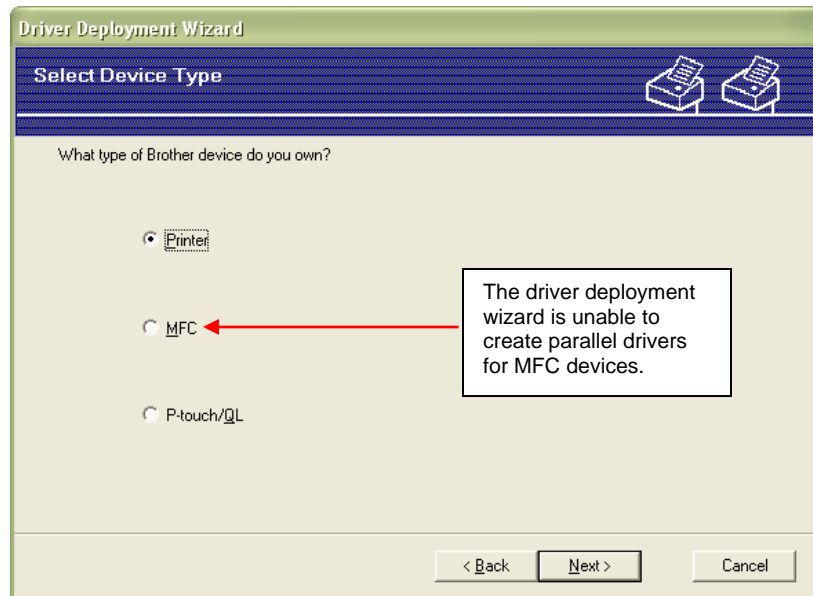
**Step 2:** The driver deployment wizard welcome screen is displayed. From here, click 'Next'.



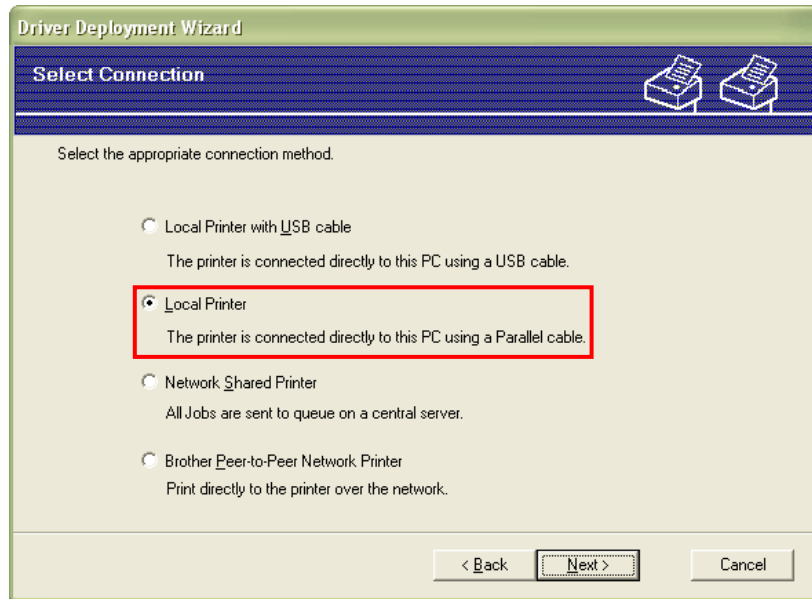
**Step 3:** Select the type of Brother device you want to create a driver for. You can select from printer, MFC or P-Touch/QL. Once you have made your selection, click 'Next'.

If you are not sure what type of machine you have, then simply answer the following:

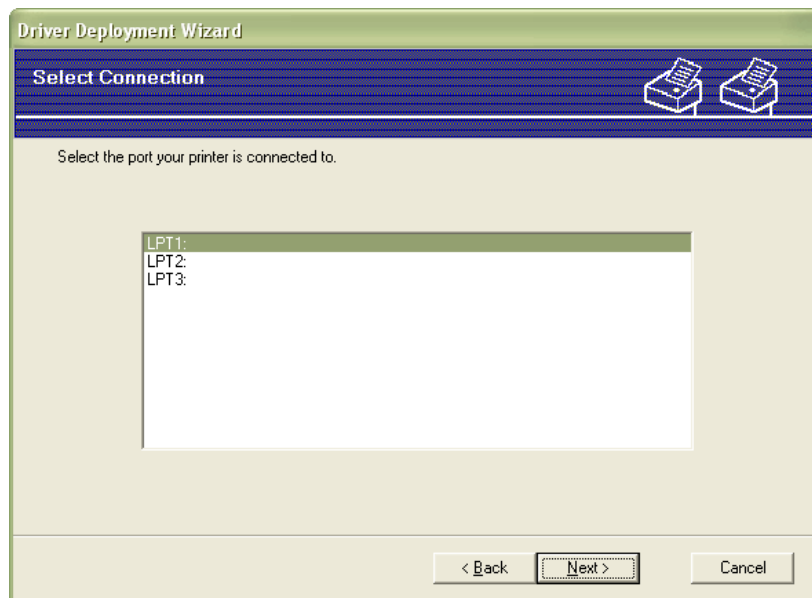
Does the model name of you device start with HL (e.g. HL-4040CN)? If the answer is yes then you have a printer. If not, does the model name of your device begin with fax, DCP or MFC (e.g. MFC-8870DW)? If yes, you have an MFC, which is not supported by DDW to create parallel drivers. If your machine is nether of these then do you use it for only printing labels? If so, you have a P-Touch/QL.



**Step 4:** Select 'Local Printer' then click 'Next'.

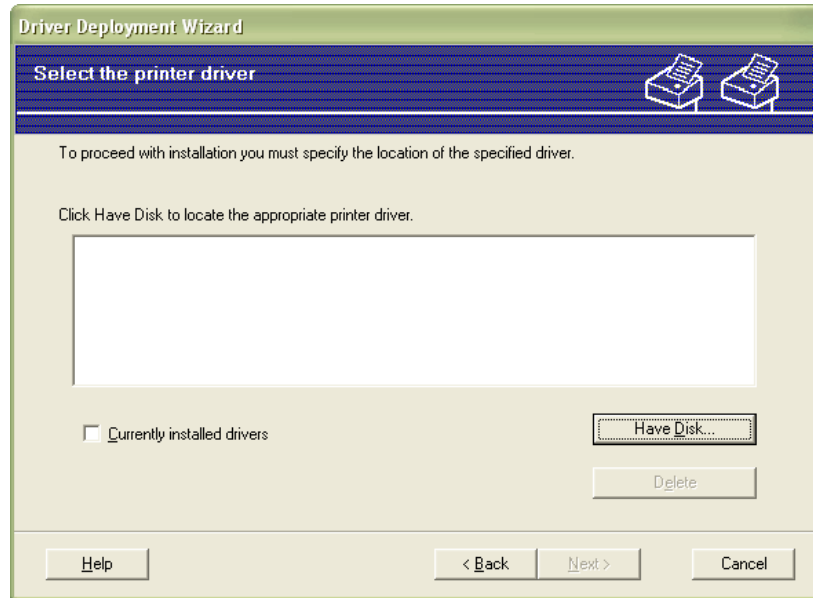


**Step 5:** Select which LPT port you want to assign.

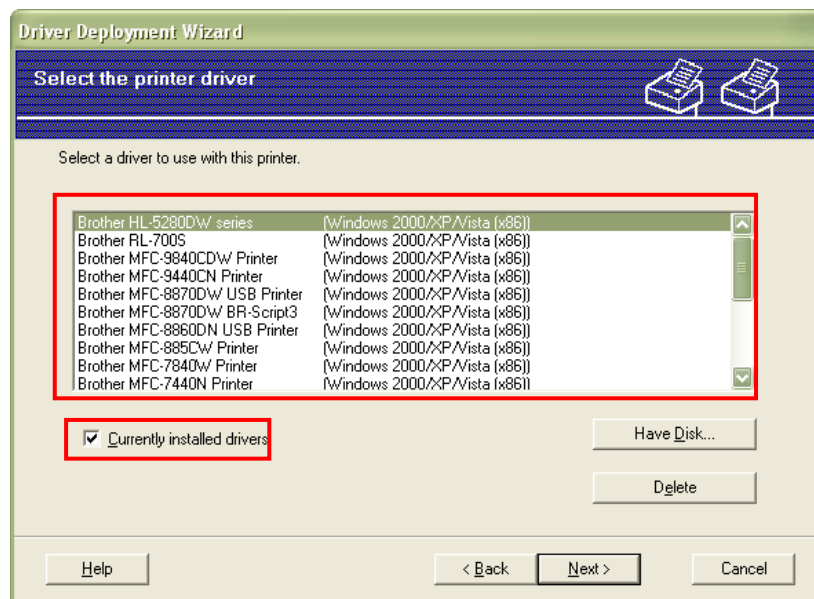


**Step 6:** You must now give the driver deployment wizard access to the necessary printer drivers. You can use drivers which are currently installed on your computer or ones that are on a disk.

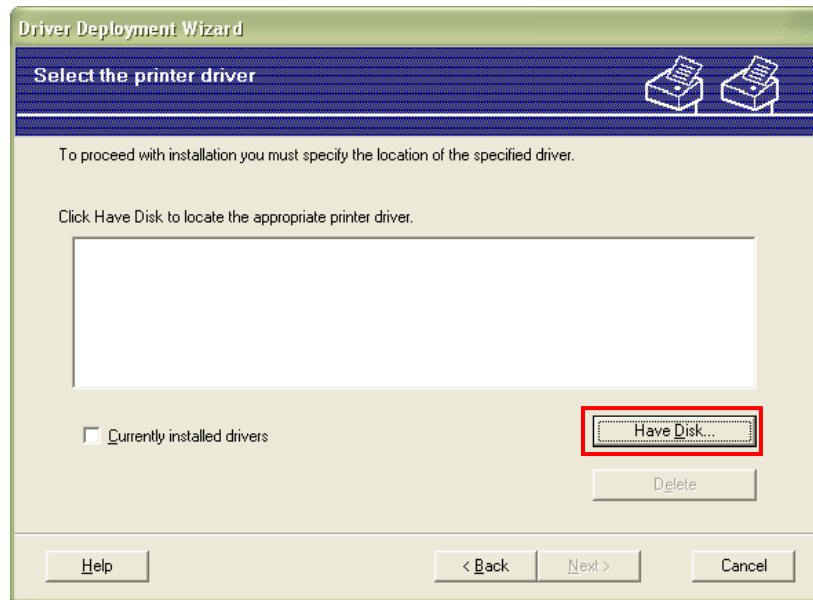
Later on, the driver deployment wizard will take these drivers and convert them into a single executable file.



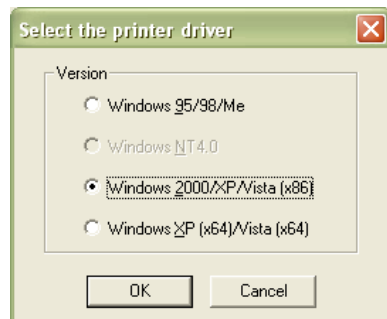
**Step 7:** If you want to use a printer driver which is not already installed go to step 8. To use drivers which are pre-installed, place a tick in the '**Currently installed drivers**' tick box and select the appropriate driver from the list. Once you have selected your driver, click the '**Next**' button and proceed to step 15 on page 21.



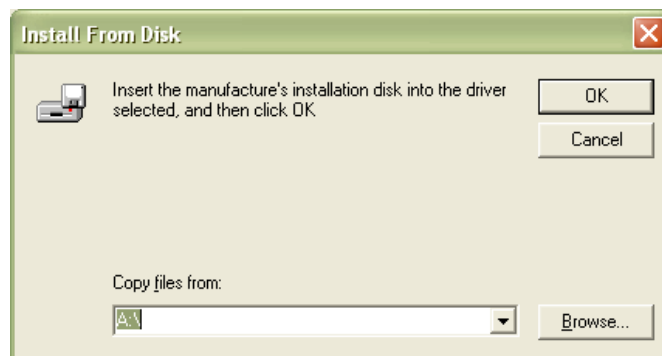
**Step 8:** To use a printer driver which is not already installed, click the **'Have Disk...'** button. Please note that if you choose this option, you will not be able to customise the driver in as much detail as you can with a driver which is pre-installed on your computer.



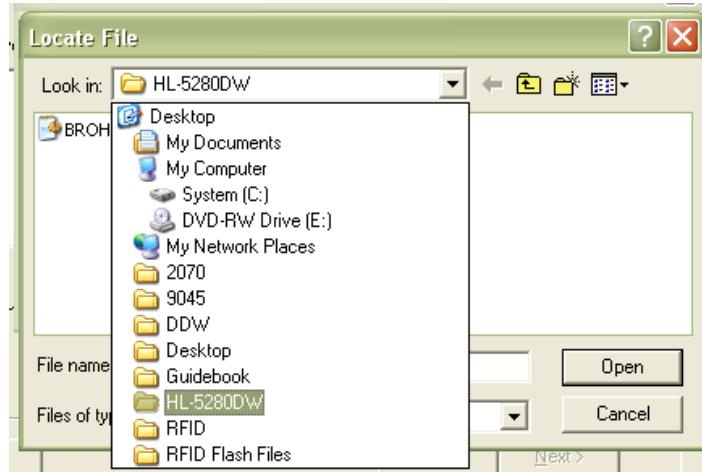
**Step 9:** Select which operating system you want to use your new printer drivers with then click **'OK'**. (This is handy if you want to roll out your driver to a computer which has a different version of Windows® than the one you are running the driver deployment wizard from).



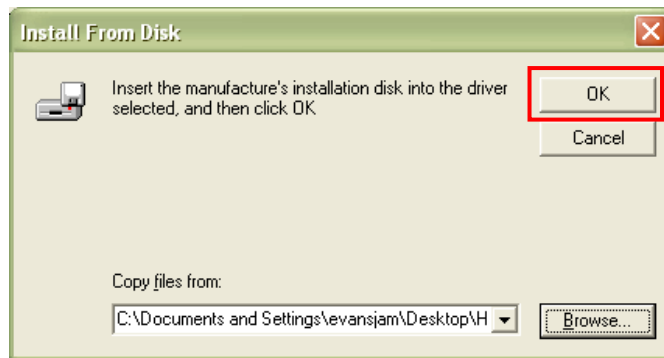
**Step 10:** Now specify where the drivers are located. You can do this by specifying the path directly into the **'Copy files from:'** box or by clicking on the **'Browse'** button.



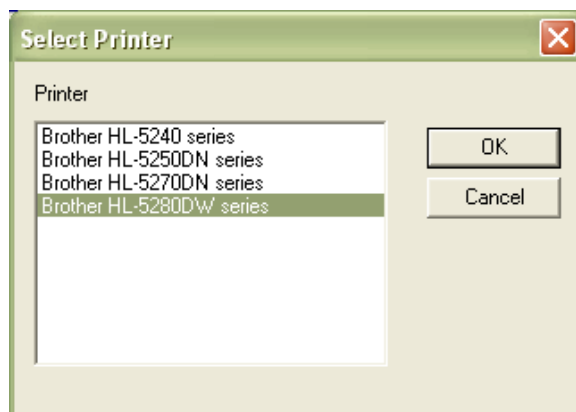
**Step 11:** If you clicked the **'Browse'** button, you will be able to search your computer or other peripherals like CD-ROMS or USB memory drives.



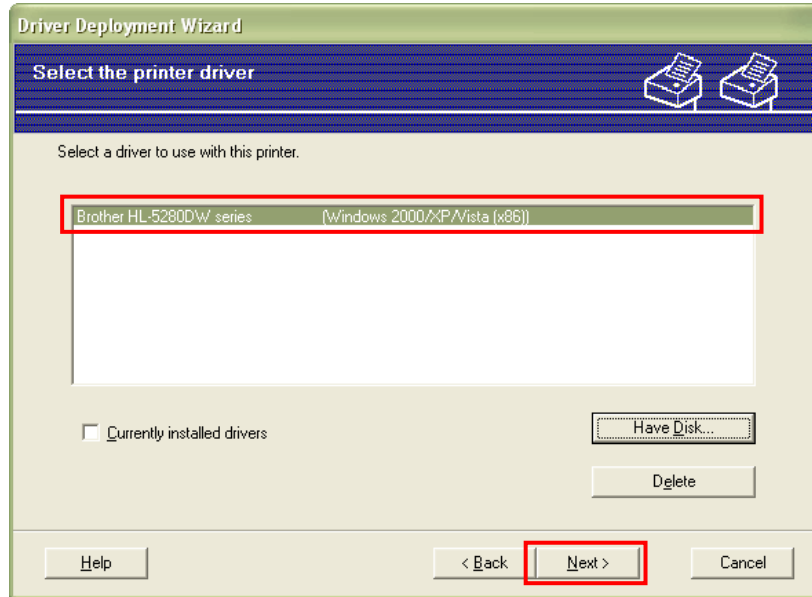
**Step 12:** Once you have found your driver, click **'OK'**.



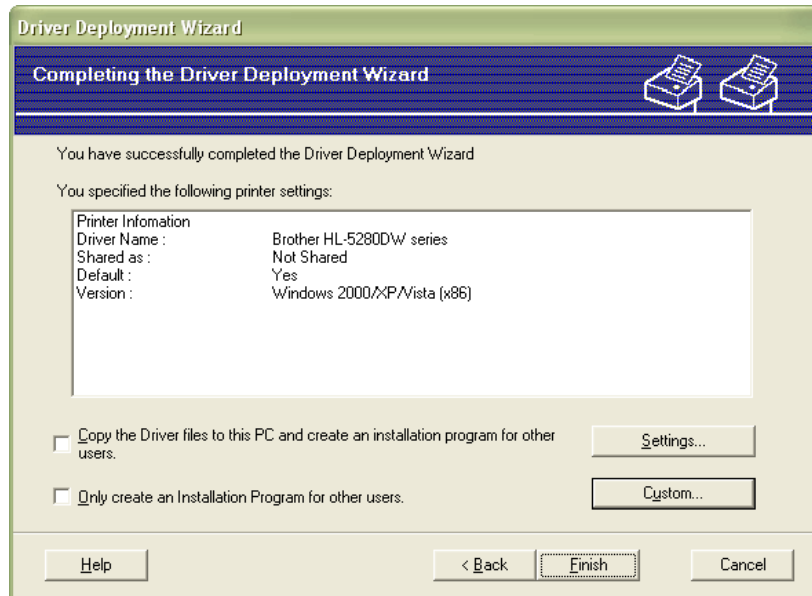
**Step 13:** Select the appropriate model name from the list then click **'OK'**.



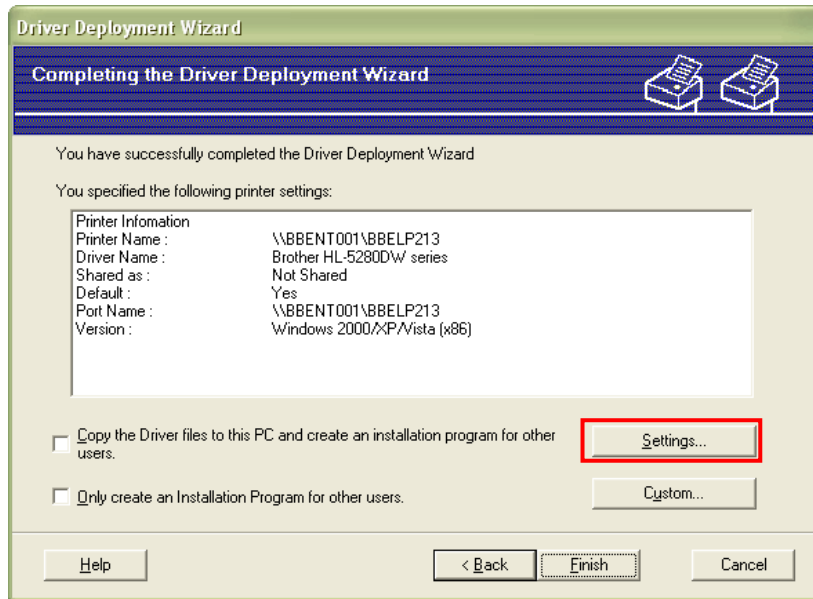
**Step 14:** Your selected driver will now appear. If it is the correct one, click **'Next'**. If the driver is incorrect, go back to step 8 on page 19.



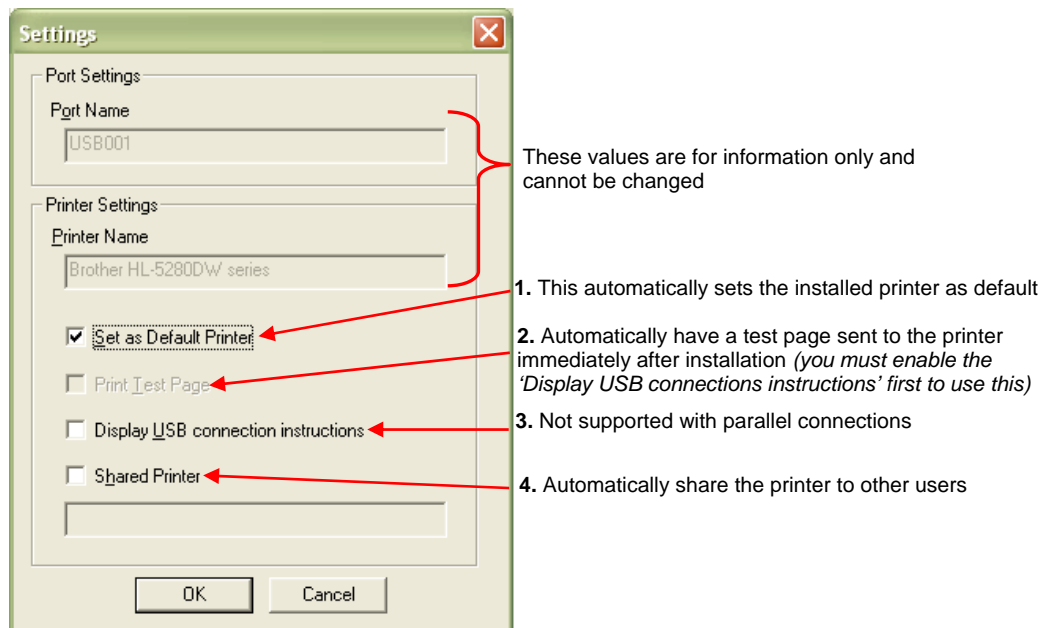
**Step 15:** Further information about your driver will now appear along with some further options. From here you can start to customise your driver and specify how you want it to install.



**Step 16:** To apply some basic install configurations, click 'Settings'.

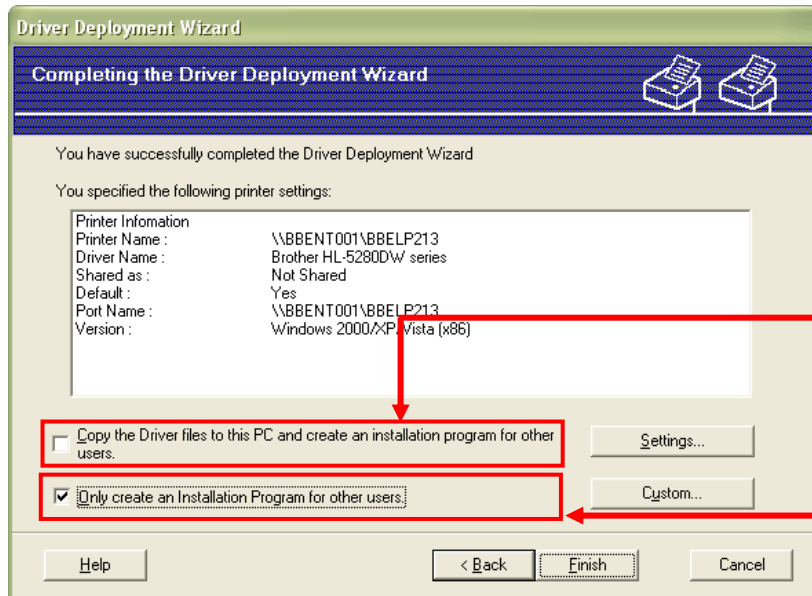


**Step 17:** From here, there are 4 basic configurations you can apply:



**Step 18:** Once you have finished, click 'OK'.

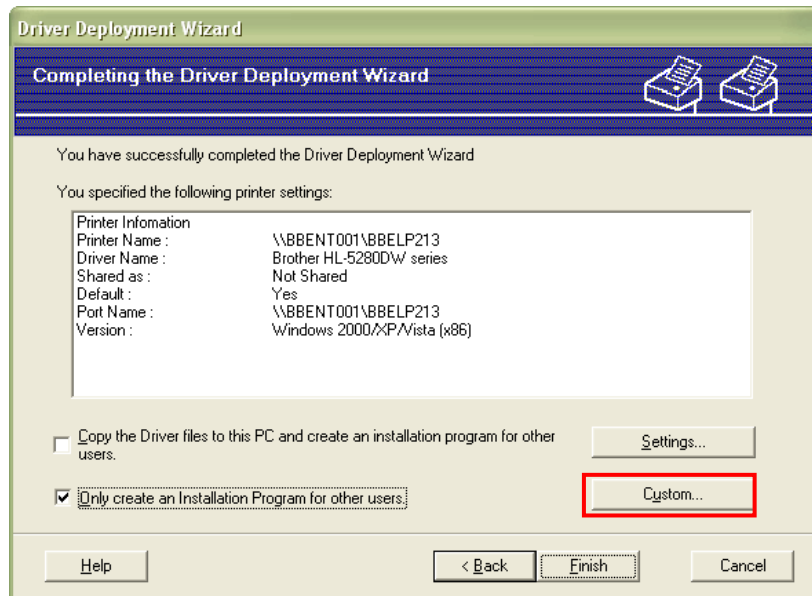
**Step 19:** To customise your new driver, ensure that you have ticked on one of the tick boxes, as show below.



This will create the new DDW driver and copy the files over to your PC.

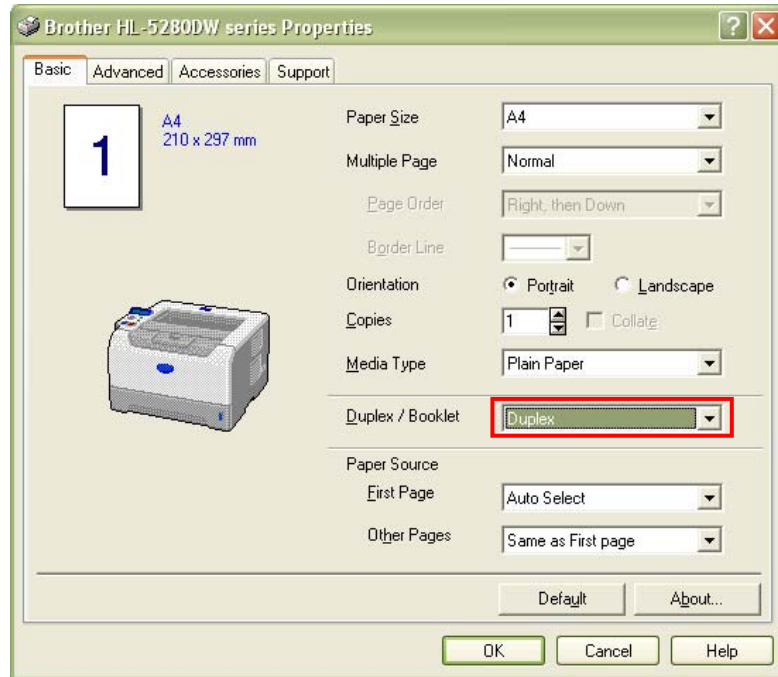
This will create the new DDW driver only.

**Step 20:** Then click 'Custom'.



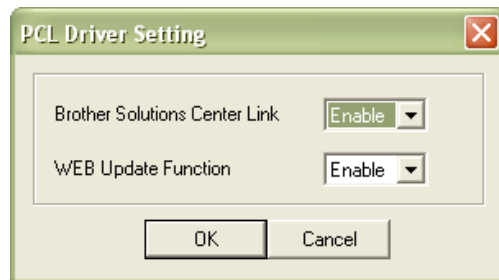
If you are creating your new driver from one which is pre-installed on your computer then you will be able to change its default settings, such as enabling double-sided (duplex) printing as standard. If the driver is not pre-installed and is on a CD for example, you will not be able to do this therefore please proceed to step 21.

The printer driver shown below is of a HL-5280DW. Other printer drivers and their functions will be different.



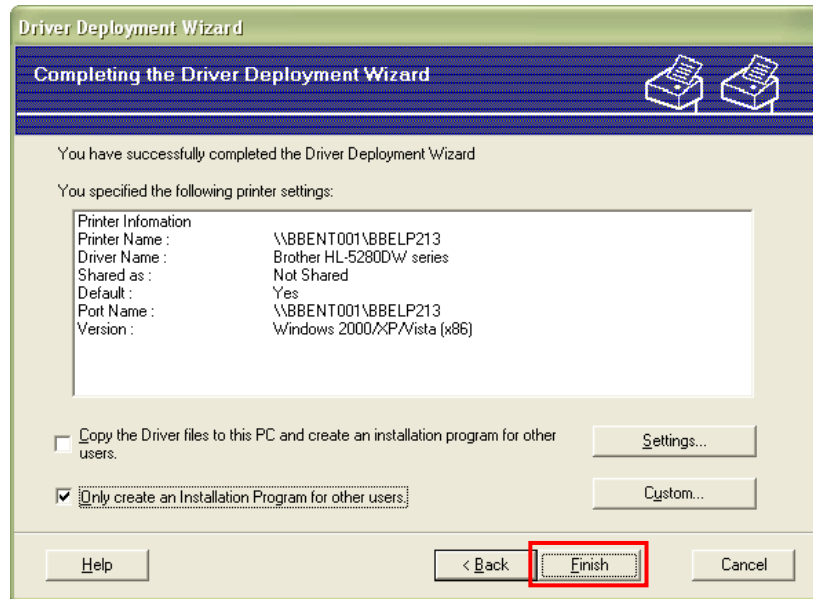
Once you have made your changes, click 'OK'.

**Step 21:** You will now be asked if you want to make a few more changes to your new printer driver. If the driver you are working from was not pre-installed on your computer this will be the only settings you can change. *The contents of this box may vary depending on which printer you are configuring.*

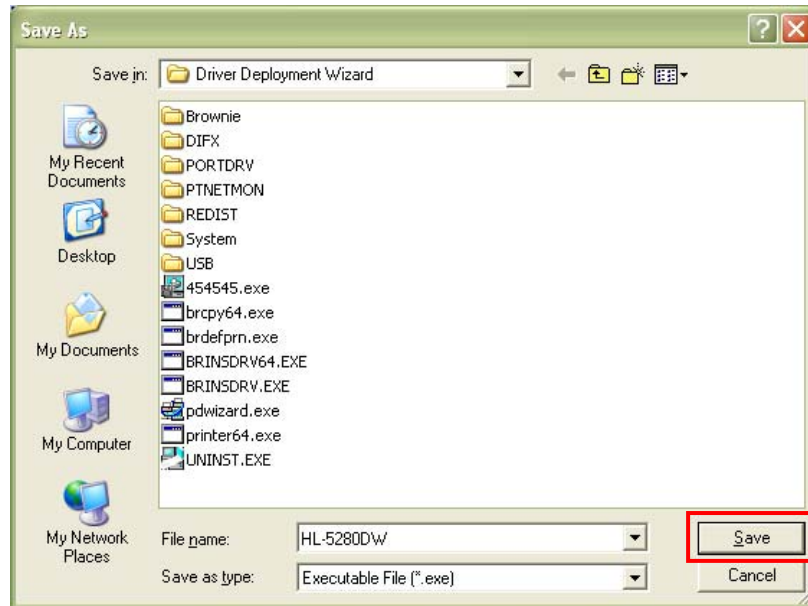


Once you have made your changes, click 'OK'.

**Step 22:** When you are made your configurations, click on 'Finish'.



**Step 23:** Give you new driver a name, select where you want the driver deployment wizard to put it then click 'Save'.



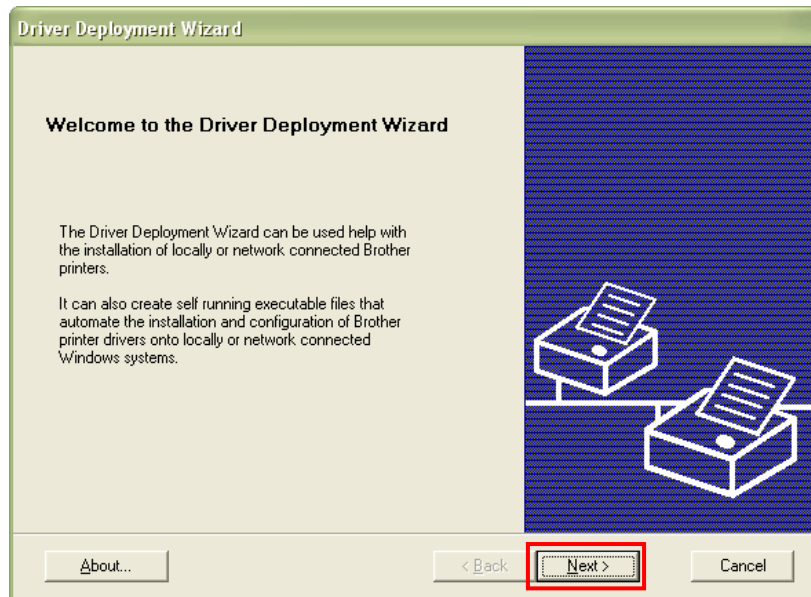
**Step 24:** Your new driver will be created. To use, simply connect the printer to your computer and double-click the newly created executable file. That's it!



### 4.3: Creating network drivers for a Windows® XP / Vista PC (shared device - print server)

**Step 1:** Click on Windows Start Menu → Brother Personal Utilities → Brother Driver Deployment Wizard → Driver Deployment Wizard.

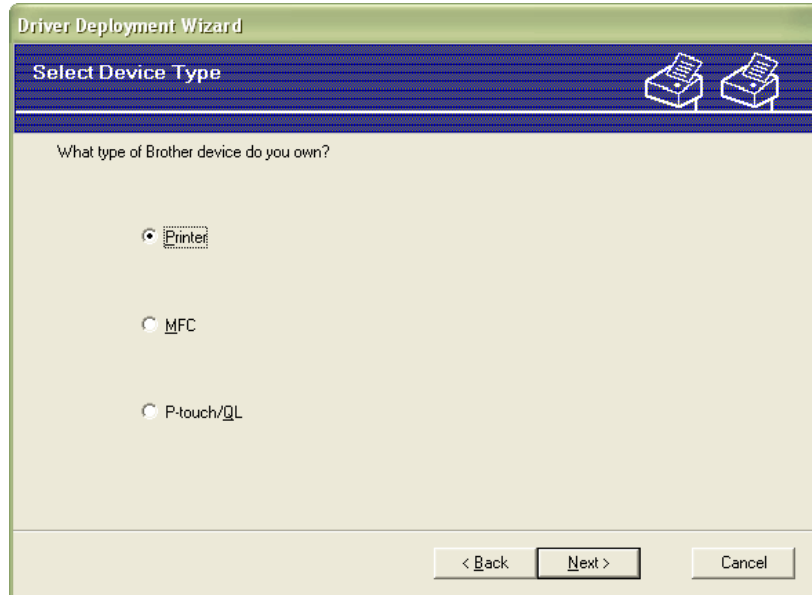
**Step 2:** The driver deployment wizard welcome screen is displayed. From here, click 'Next'.



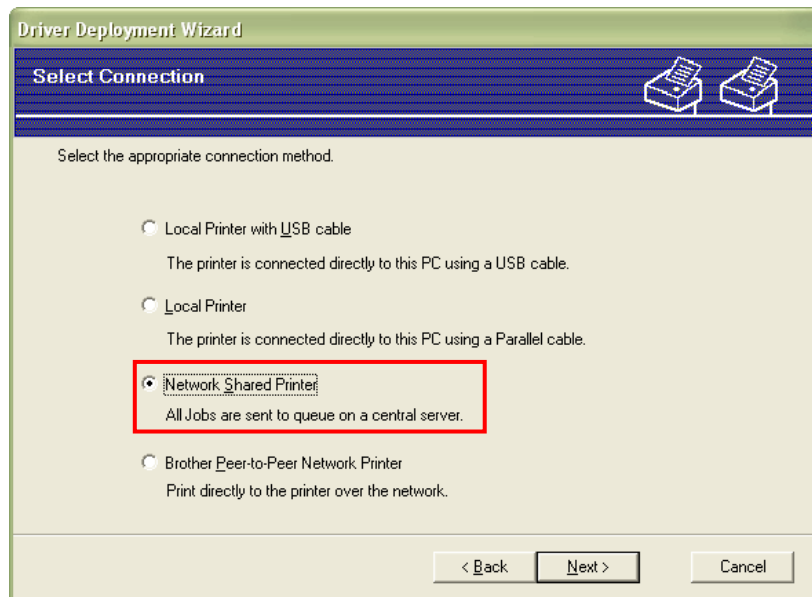
**Step 3:** Select the type of Brother device you want to create a driver for. You can select from printer, MFC or P-Touch/QL. Once you have made your selection, click **'Next'**.

If you are not sure what type of machine you have, then simply answer the following:

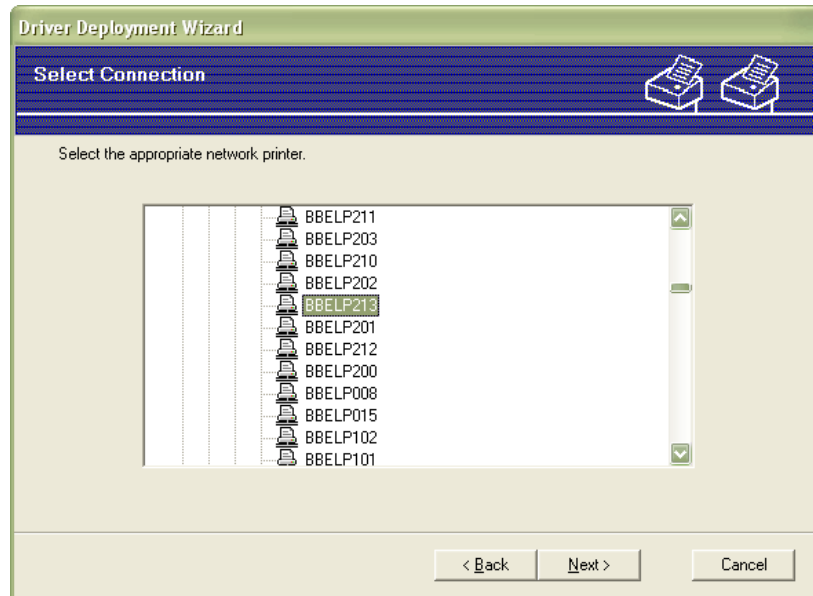
Does the model name of your device start with HL (e.g. HL-4040CN)? If the answer is yes then you have a printer. If not, does the model name of your device begin with fax, DCP or MFC (e.g. MFC-8870DW)? If yes, you have an MFC. If not, is your Brother device a dedicated label printer? If so, you have a P-Touch/QL.



**Step 4:** Select **'Network Shared Printer'** then click **'Next'**.

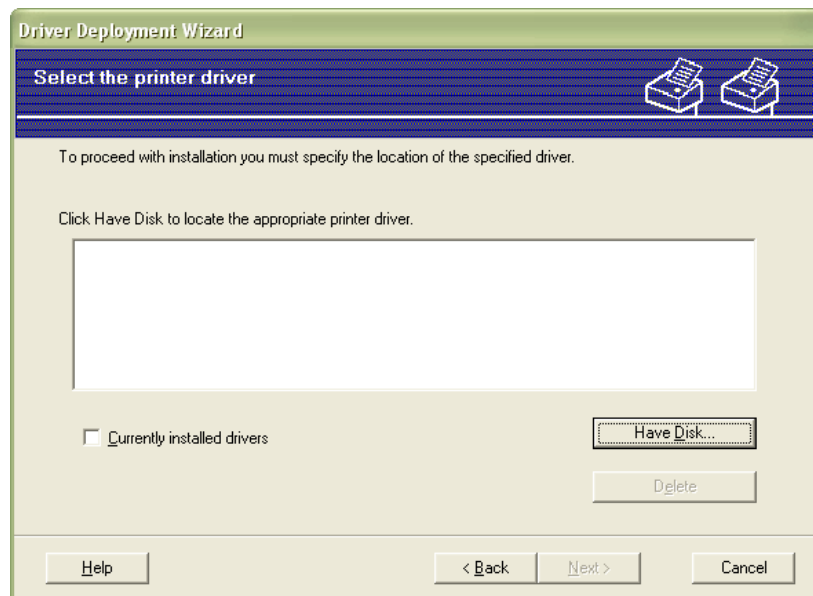


**Step 5:** The driver deployment wizard will list all the available print servers on your network. Select the one which you want to connect to.

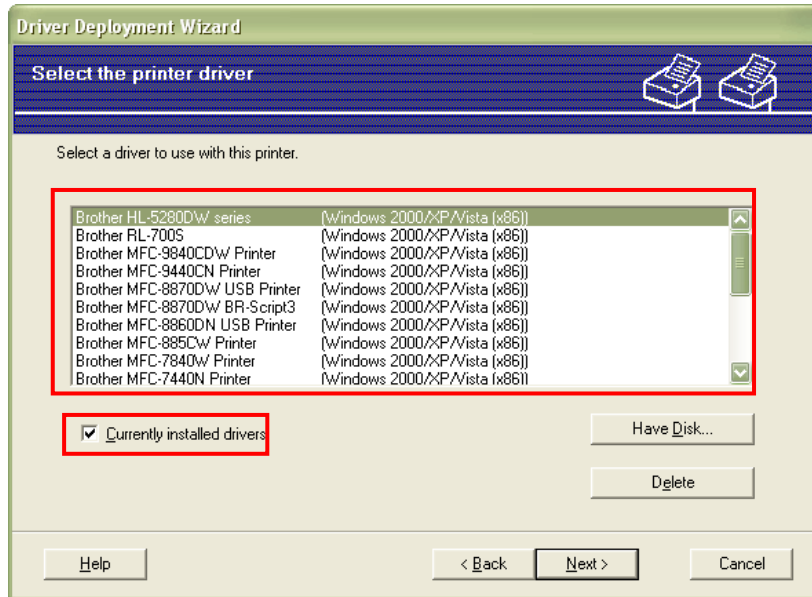


**Step 6:** You must now give the driver deployment wizard access to the necessary printer drivers. You can use drivers which are currently installed on your computer or ones that are on a disk.

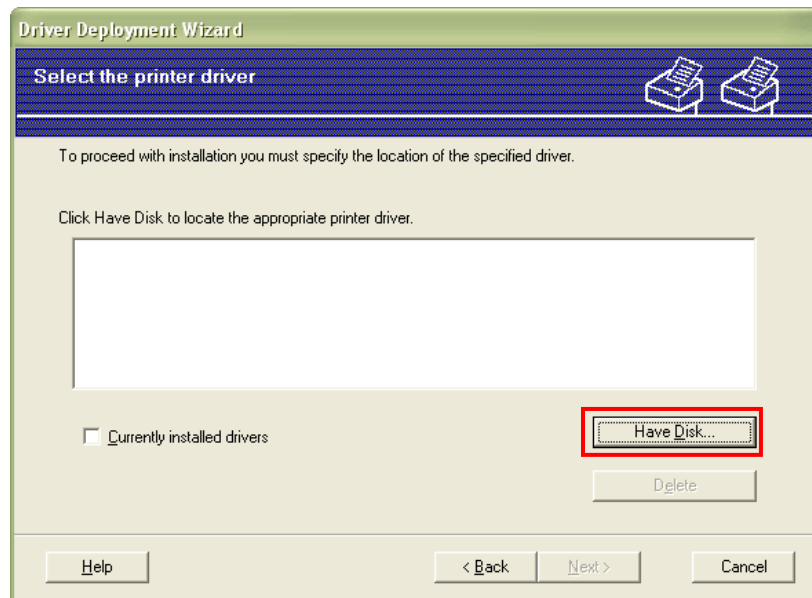
Later on, the driver deployment wizard will take these drivers and convert them into a single executable file.



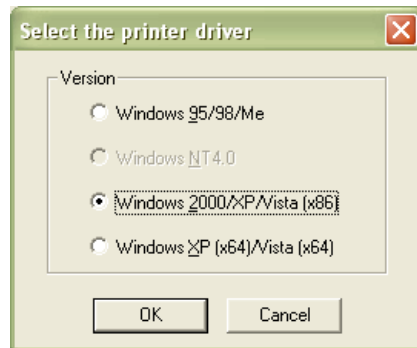
**Step 7:** If you want to use a printer driver which is not already installed go to step 8. To use drivers which are pre-installed, place a tick in the '**Currently installed drivers**' tick box and select the appropriate driver from the list. Once you have selected your driver, click the '**Next**' button and proceed to step 15 on page 32.



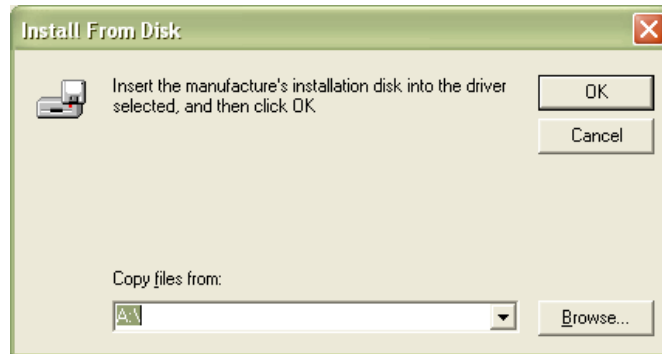
**Step 8:** To use a printer driver which is not already installed, click the '**Have Disk...**' button. Please note that if you choose this option, you will not be able to customise the driver in as much detail as you can with a driver which is pre-installed on your computer.



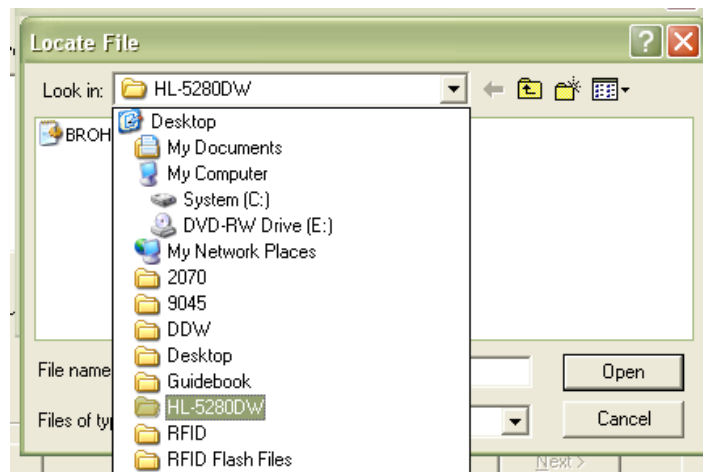
**Step 9:** Select which operating system you want to use your new printer drivers with then click 'OK'. (This is handy if you want to roll out your driver to a computer which has a different version of Windows® than the one you are running the driver deployment wizard from).



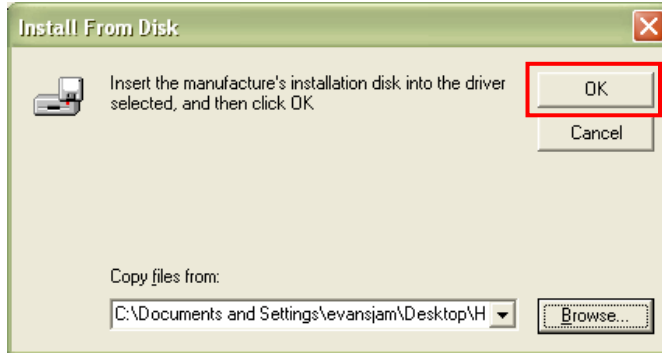
**Step 10:** Now specify where the drivers are located. You can do this by specifying the path directly into the 'Copy files from:' box or by clicking on the 'Browse' button.



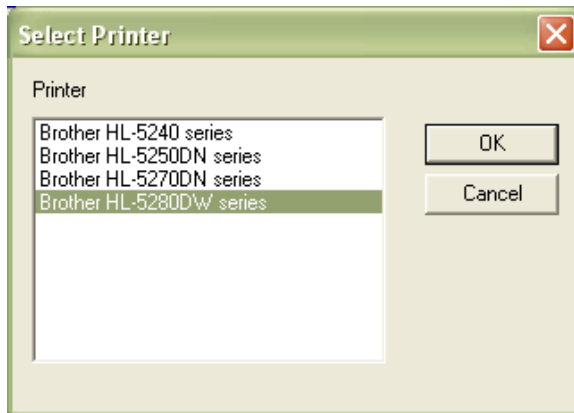
**Step 11:** If you clicked the 'Browse' button, you will be able to search your computer or other peripherals like CD-ROMS or USB memory drives.



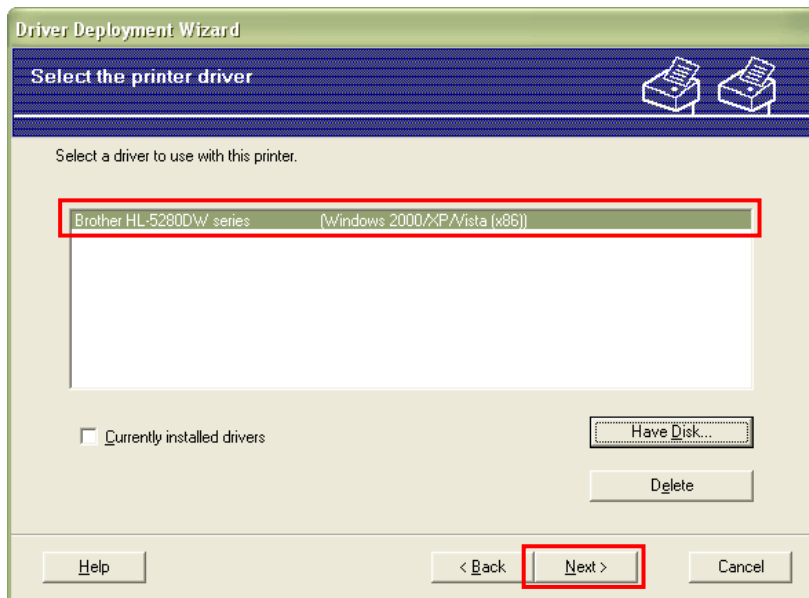
**Step 12:** Once you have found your driver, click **'OK'**.



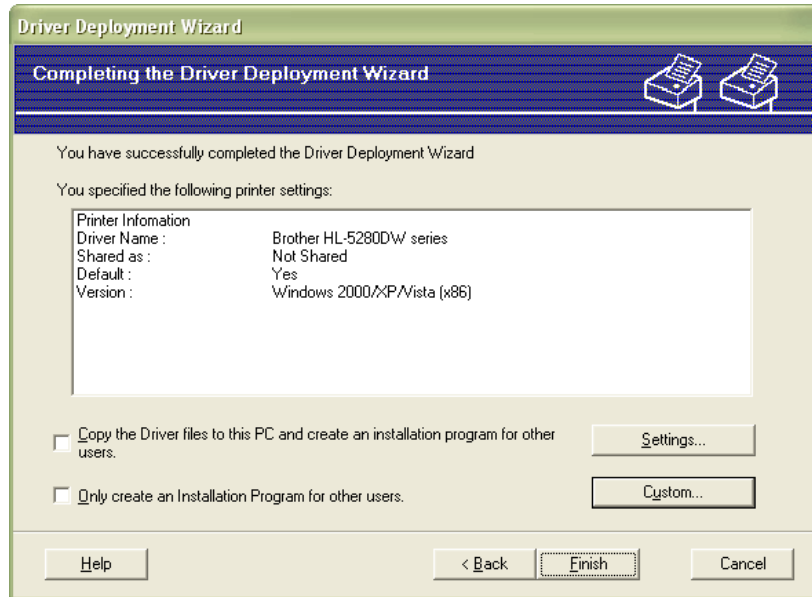
**Step 13:** Select the appropriate model name from the list then click **'OK'**.



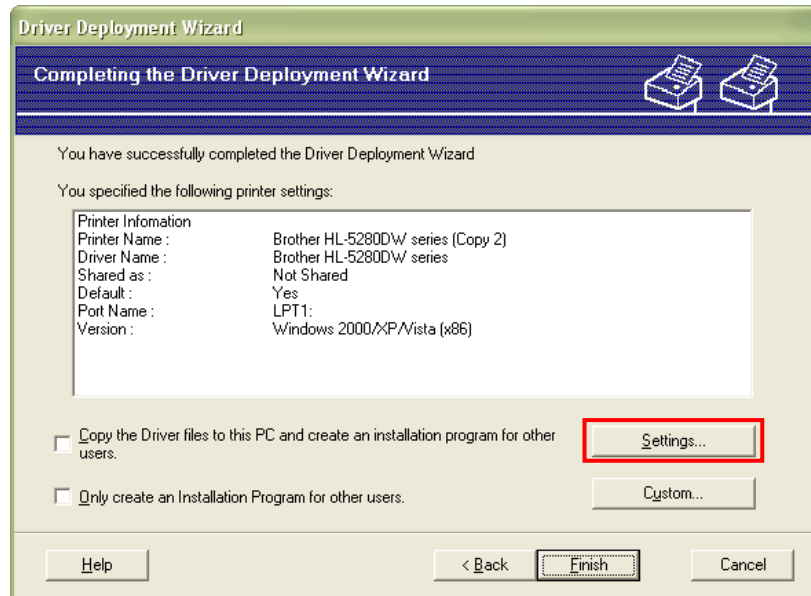
**Step 14:** Your selected driver will now appear. If it is the correct one, click **'Next'**. If the driver is incorrect, go back to step 8 on page 29.



**Step 15:** Further information about your driver will now appear along with some further options. From here you can start to customise your driver and specify how you want it to install.



**Step 16:** To apply some basic install configurations, click 'Settings'.



**Step 17:** From here, there are 4 basic configurations you can apply:

These values are for information only and cannot be changed

1. This automatically sets the installed printer as default
2. Automatically have a test page sent to the printer immediately after installation (*you must enable the 'Display USB connections instructions' first to use this*)
3. Not supported with parallel connections
4. Automatically share the printer to other users

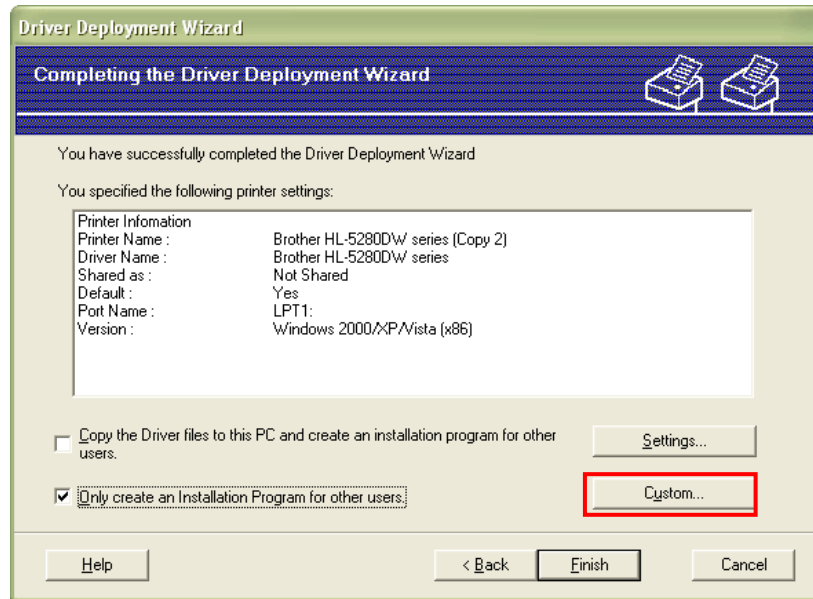
**Step 18:** Once you have finished, click 'OK'.

**Step 19:** To customise your new driver, ensure that you have ticked on one of the tick boxes, as show below.

This will create the new DDW driver and copy the files over to your PC.

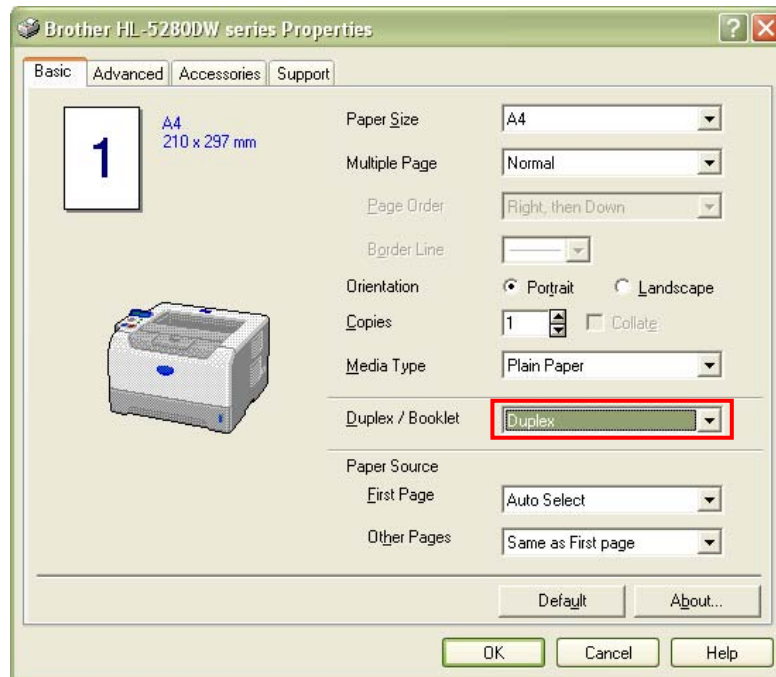
This will create the new DDW driver only.

**Step 20:** Then click **'Custom'**.



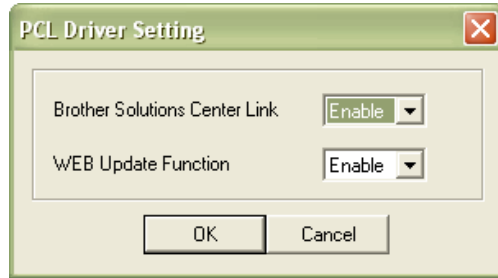
If you are creating your new driver from one which is pre-installed on your computer then you will be able to change its default settings, such as enabling double-sided (duplex) printing as standard. If the driver is not pre-installed and is on a CD for example, you will not be able to do this therefore please go straight to step 21 on page 35.

The printer driver shown below is of a HL-5280DW. Other printer drivers and their functions will be different.



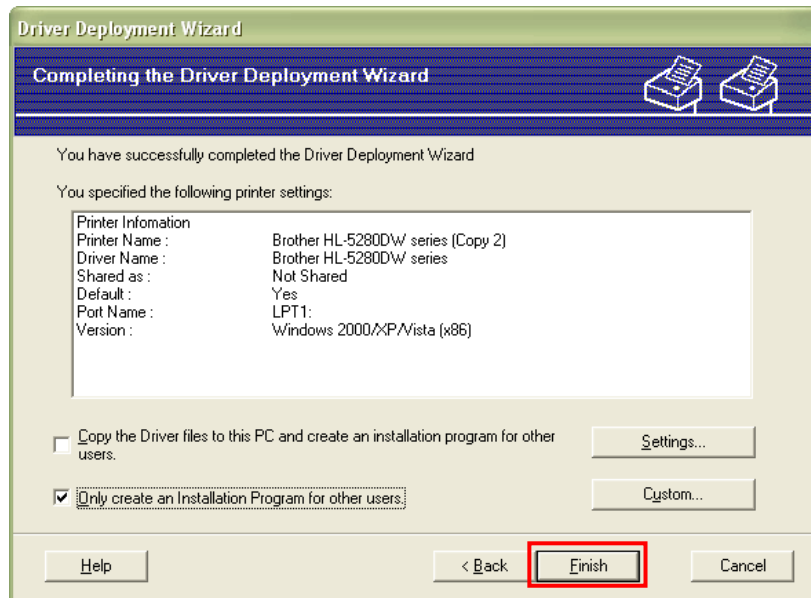
Once you have made your changes, click **'OK'**.

**Step 21:** You will now be asked if you want to make a few more changes to your new printer driver. If the driver you are working from was not pre-installed on your computer this will be the only settings you can change. *The contents of this box may vary depending on which printer you are configuring.*

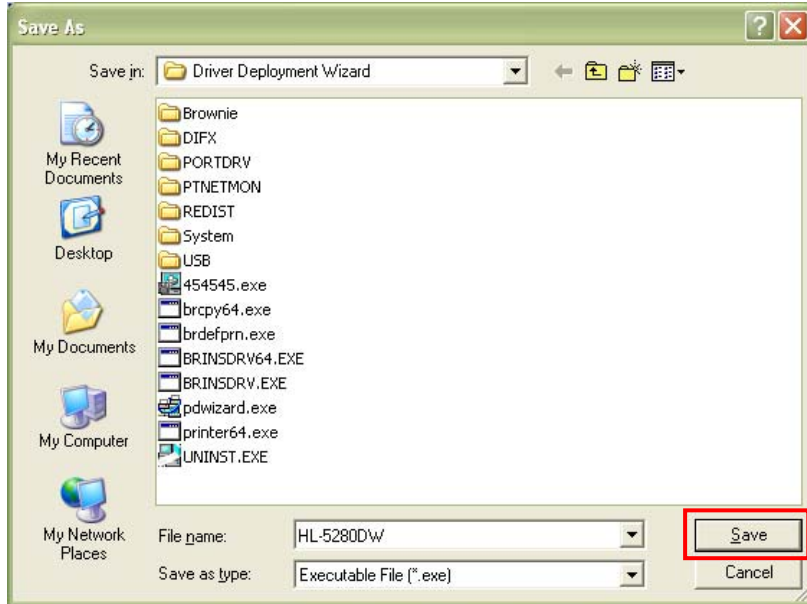


Once you have made your changes, click 'OK'.

**Step 22:** When you are made your configurations, click on 'Finish'.



**Step 23:** Give you new driver a name, select where you want it to go then click **'Save'**.



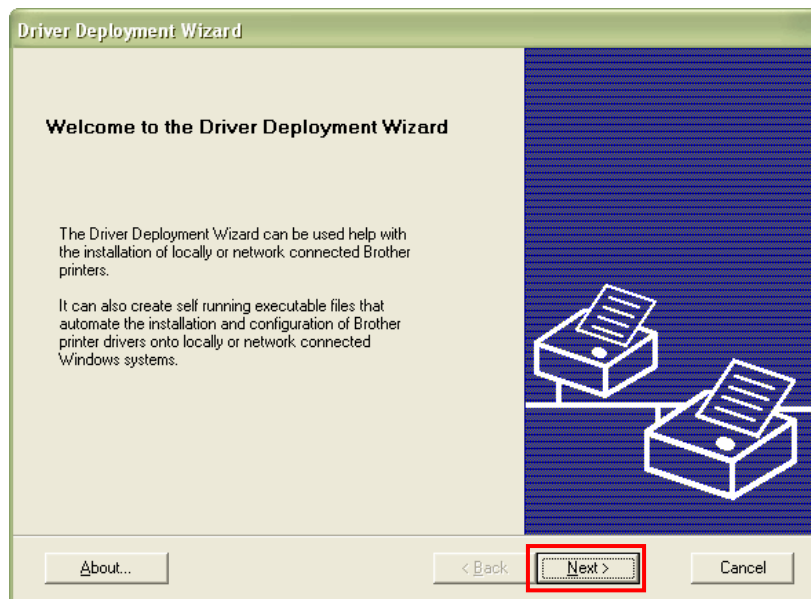
**Step 24:** Your new driver will be created. To use, simply connect the printer to your computer and double-click the newly created executable file. That's it!



#### **4.4: Creating network drivers for a Windows® XP / Vista PC (direct connection – peer to peer)**

**Step 1:** Click on Windows Start Menu → Brother Personal Utilities → Brother Driver Deployment Wizard → Driver Deployment Wizard.

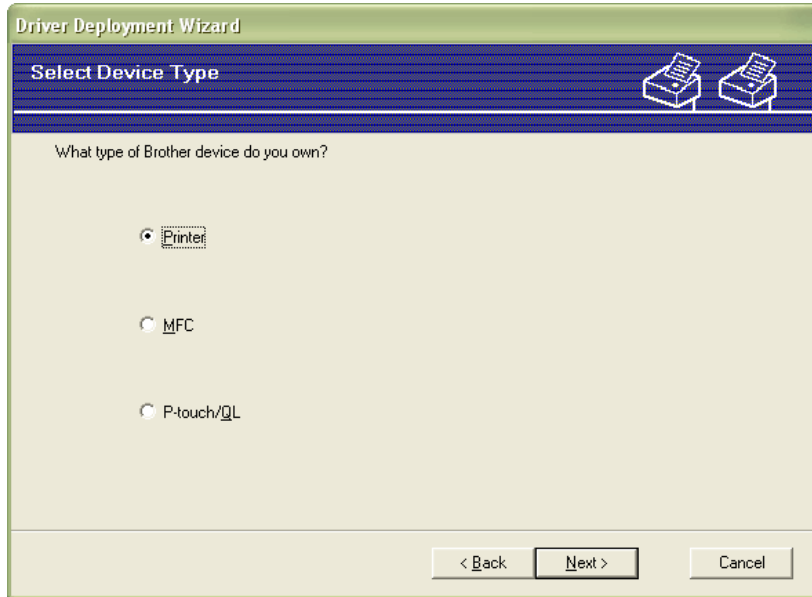
**Step 2:** The driver deployment wizard welcome screen is displayed. From here, click 'Next'.



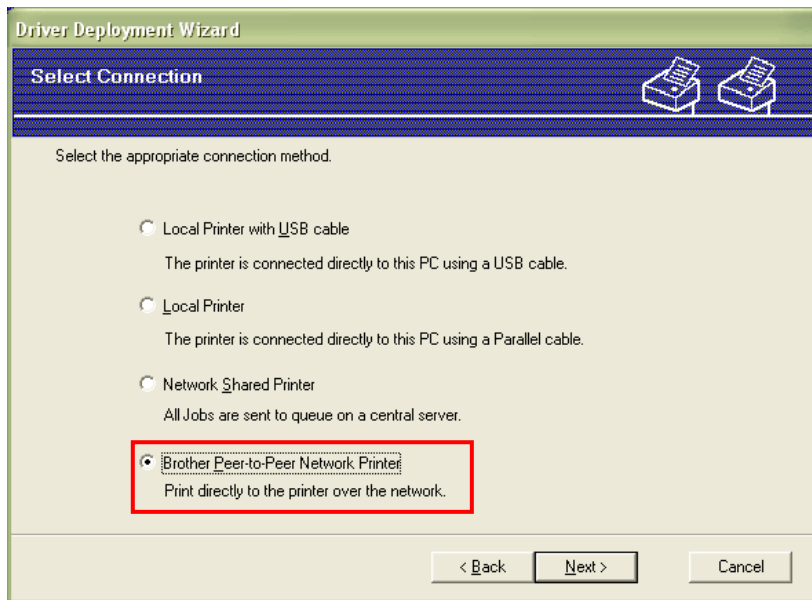
**Step 3:** Select the type of Brother device you want to create a driver for. You can select from printer, MFC or P-Touch/QL. Once you have made your selection, click **'Next'**.

If you are not sure what type of machine you have, then simply answer the following:

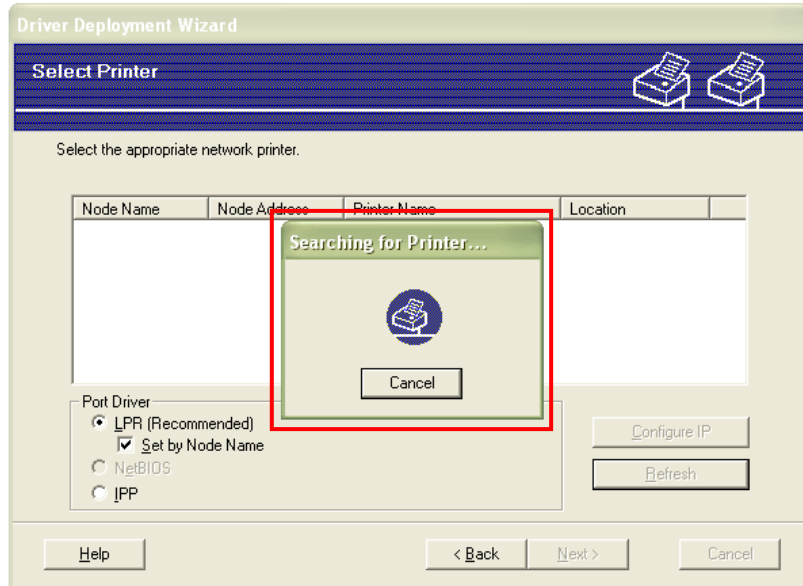
Does the model name of your device start with HL (e.g. HL-4040CN)? If the answer is yes then you have a printer. If not, does the model name of your device begin with fax, DCP or MFC (e.g. MFC-8870DW)? If yes, you have an MFC. If not, is your Brother device a dedicated label printer? If so, you have a P-Touch/QL.



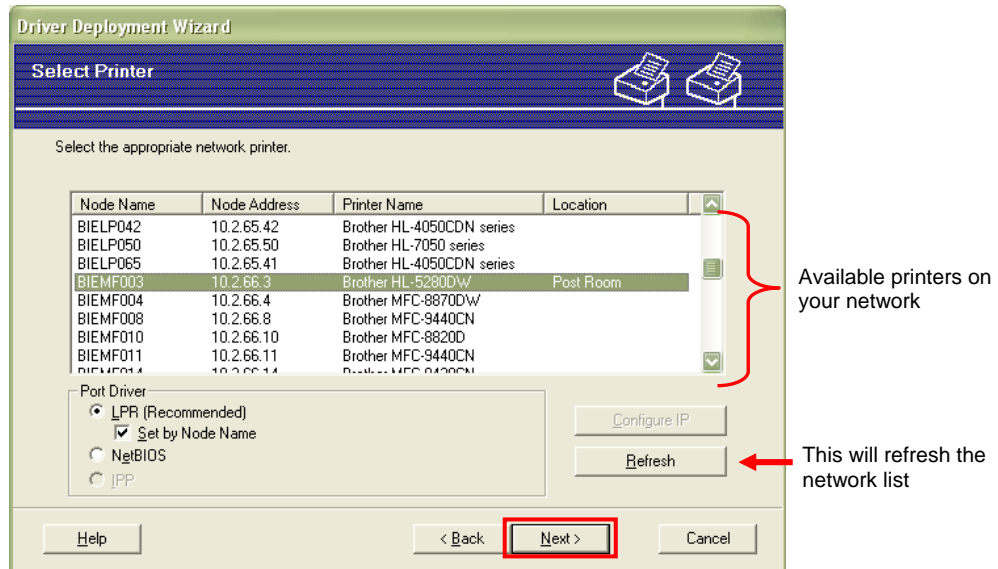
**Step 4:** Select **'Brother Peer-to-Peer Network Printer'** then click **'Next'**.



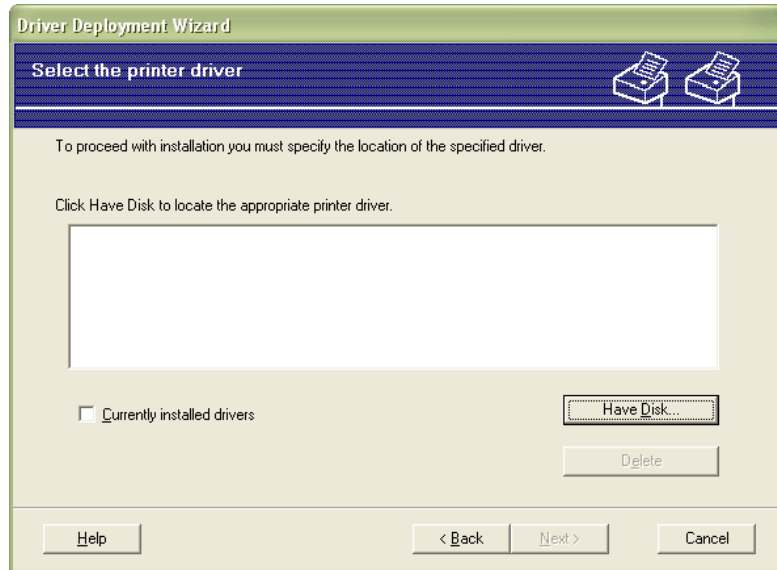
**Step 5:** The driver deployment wizard will search your network for devices which are connected to it.



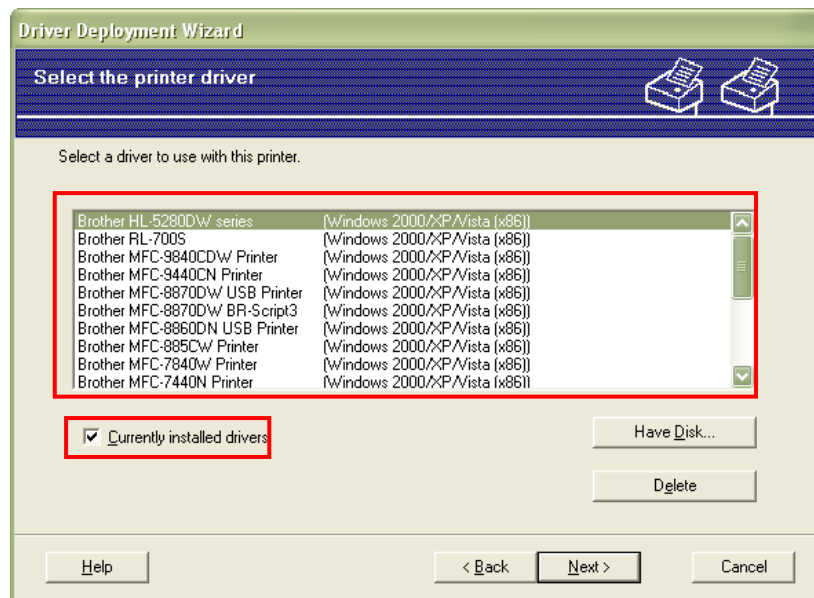
**Step 6:** Once all the devices have been identified, highlight the one you want to create a new customised driver for then click 'Next'.



**Step 7:** You must now give the driver deployment wizard access to the necessary printer drivers. You can use drivers which are currently installed on your computer or ones that are on a disk. Later on, the driver deployment wizard will take these drivers and convert them into a single executable file.



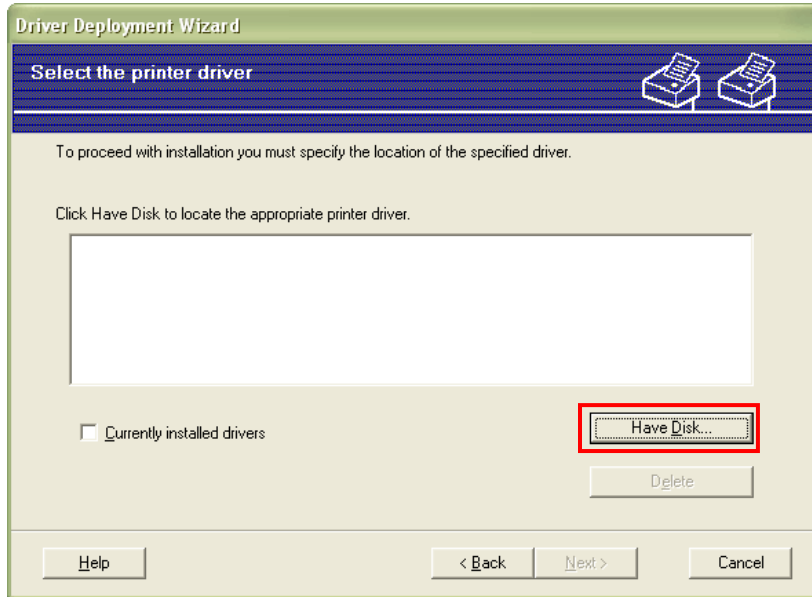
**Step 8:** If you want to use a printer driver which is not already installed go to step 9. To use drivers which are pre-installed, place a tick in the '**Currently installed drivers**' tick box and select the appropriate driver from the list. Once you have selected your driver, click the '**Next**' button and proceed to step 16 on page 43.



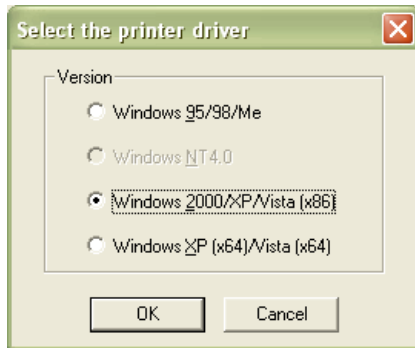
**Did you know?**

- **LPR** (Line Printer Remote) is supported by most current network printers as a method of sending commands to them.
- **NetBIOS** (Network Basic Input/Output System) was developed in the early 1980s to allow applications to communicate over a network. A lot of new printers no longer support it.
- **IPP** (Internet Printing Protocol) is used when sending commands to a printer over the Internet

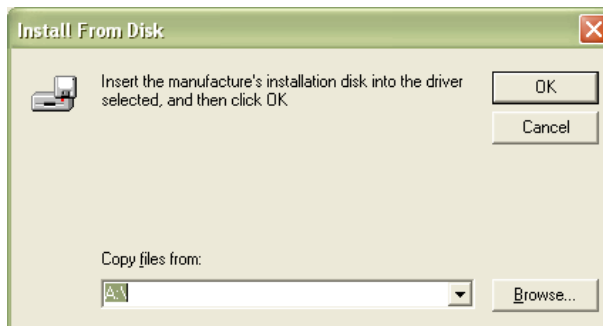
**Step 9:** To use a printer driver which is not already installed, click the **'Have Disk...'** button. Please note that if you choose this option, you will not be able to customise the driver in as much detail as you can with a driver which is pre-installed on your computer.



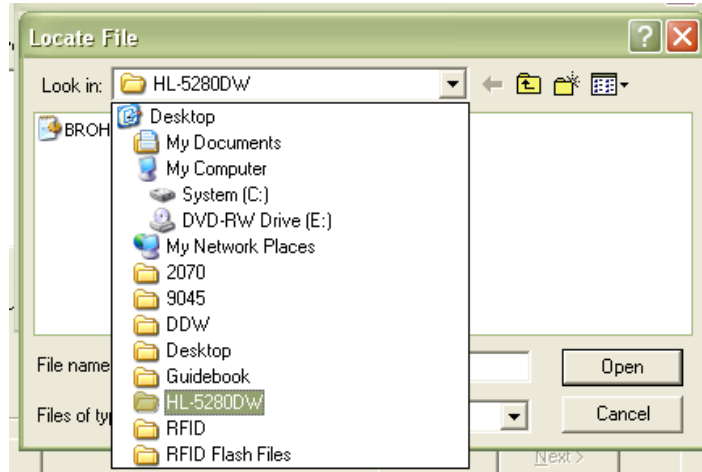
**Step 10:** Select which operating system you want to use your new printer drivers with then click **'OK'**. (This is handy if you want to roll out your driver to a computer which has a different version of Windows® than the one you are running the driver deployment wizard from).



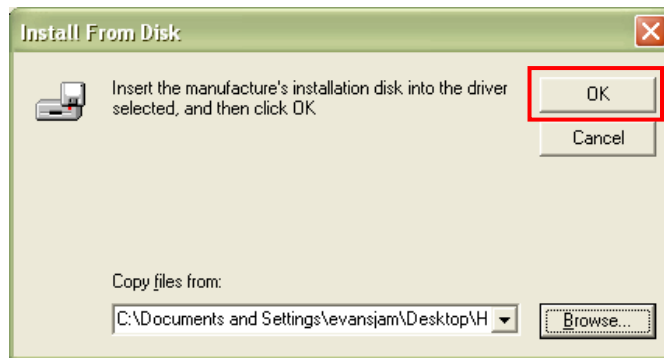
**Step 11:** Now specify where the drivers are located. You can do this by specifying the path directly into the **'Copy files from:'** box or by clicking on the **'Browse'** button.



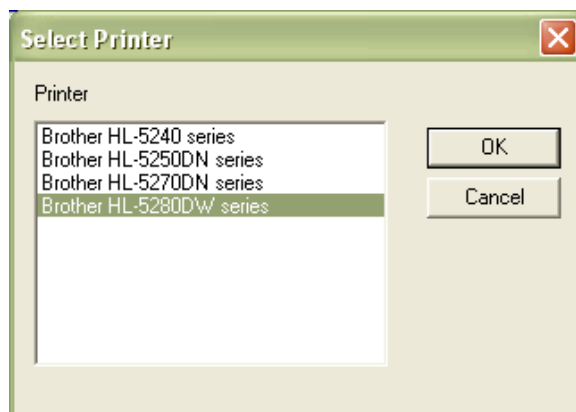
**Step 12:** If you clicked the **'Browse'** button, you will be able to search your computer or other peripherals like CD-ROMS or USB memory drives.



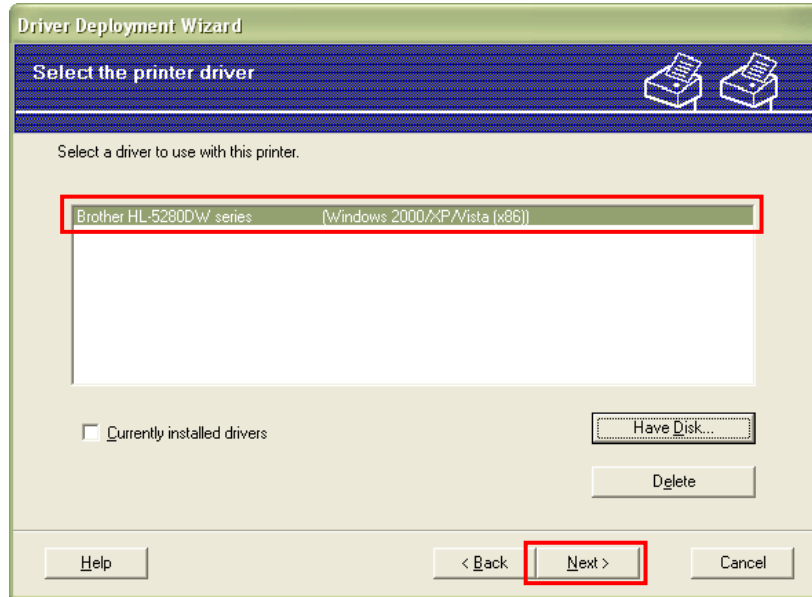
**Step 13:** Once you have found your driver, click **'OK'**.



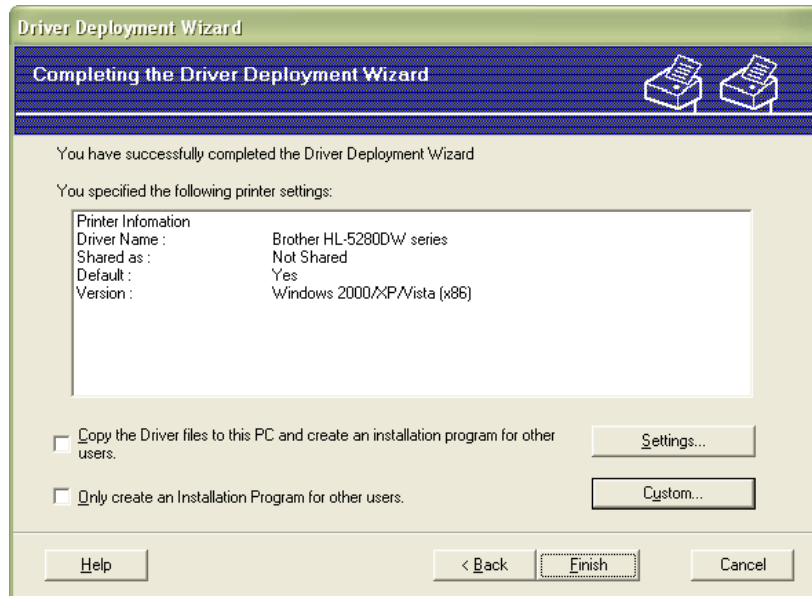
**Step 14:** Select the appropriate model name from the list then click **'OK'**.



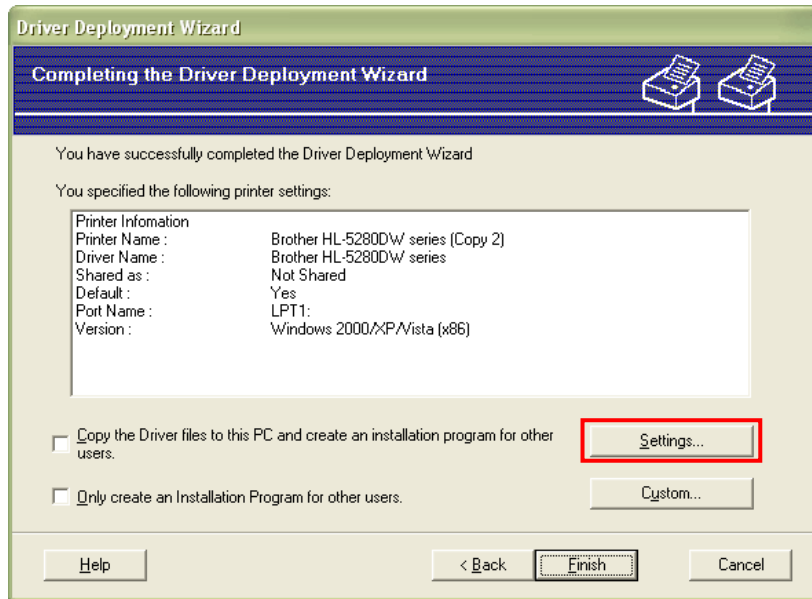
**Step 15:** Your selected driver will now appear. If it is the correct one, click **'Next'**. If the driver is incorrect, go back to step 9 on page 41.



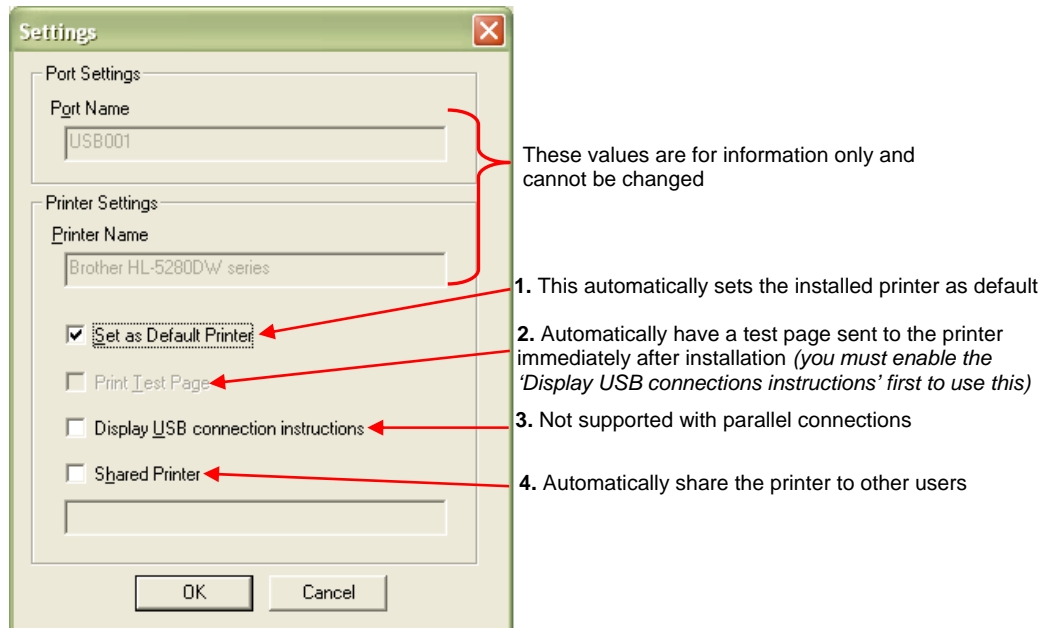
**Step 16:** Further information about your driver will now appear along with some further options. From here you can start to customise your driver and specify how you want it to install.



**Step 17:** To apply some basic install configurations, click **'Settings'**.

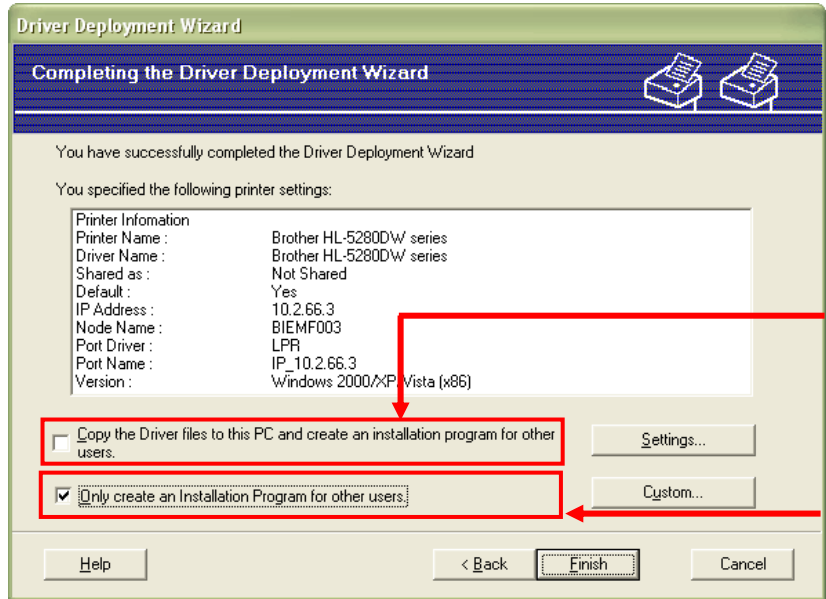


**Step 18:** From here, there are 4 basic configurations you can apply:



**Step 19:** Once you have finished, click **'OK'**.

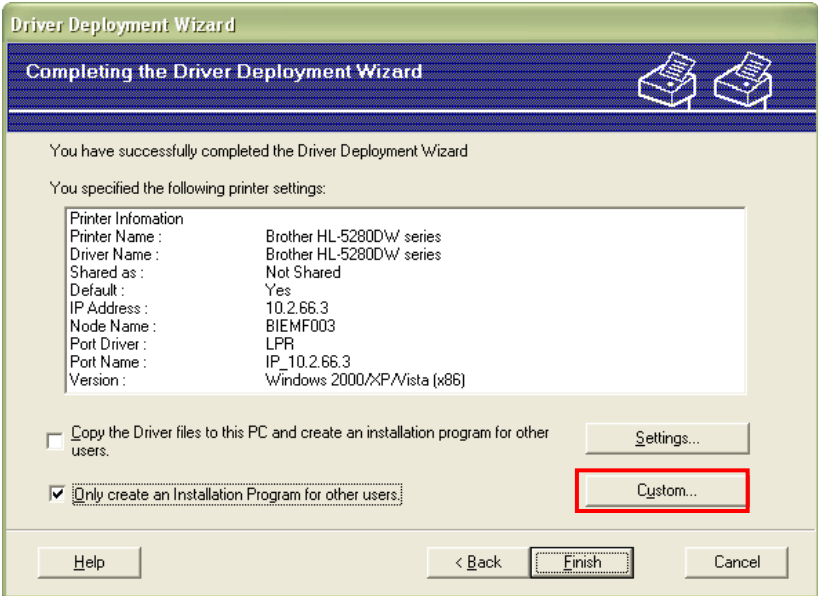
**Step 20:** To customise your new driver, ensure that you have ticked on one of the tick boxes, as show below.



This will create the new DDW driver and copy the files over to your PC.

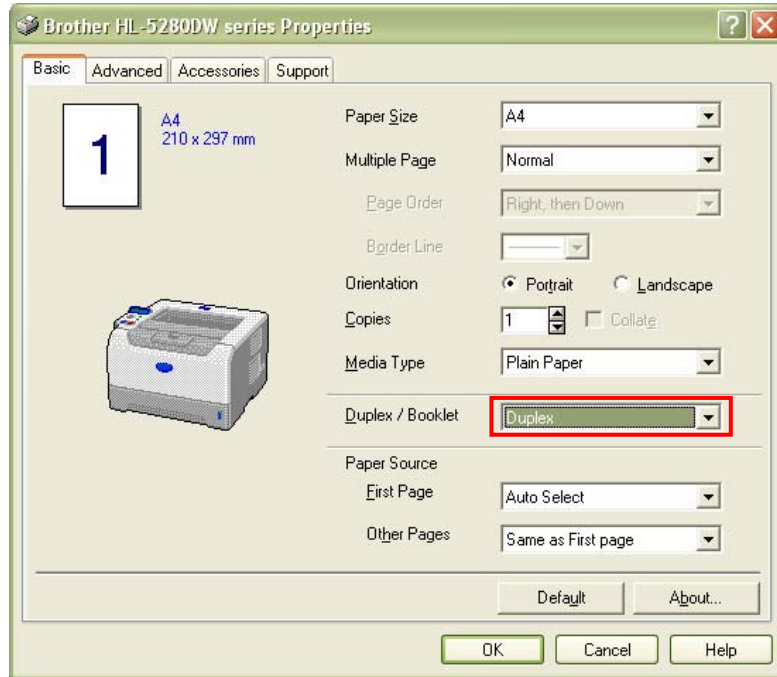
This will create the new DDW driver only.

**Step 20:** Then click 'Custom'.



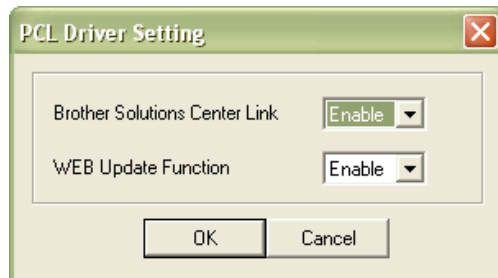
If you are creating your new driver from one which is pre-installed on your computer then you will be able to change its default settings, such enabling double-sided (duplex) printing as standard. If the driver is not pre-installed and is on a CD for example, you will not be able to do this therefore please go straight to step 21 on page 46.

The printer driver shown below is of a HL-5280DW. Other printer drivers and their functions will be different.



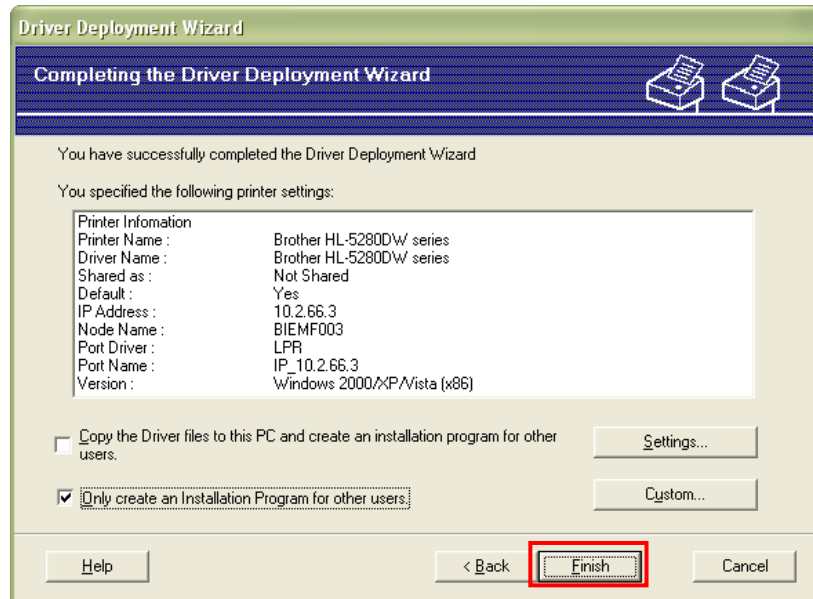
Once you have made your changes, click 'OK'.

**Step 21:** You will now be asked if you want to make a few more changes to your new printer driver. If the driver you are working from was not pre-installed on your computer this will be the only settings you can change. *The contents of this box may vary depending on which printer you are configuring.*

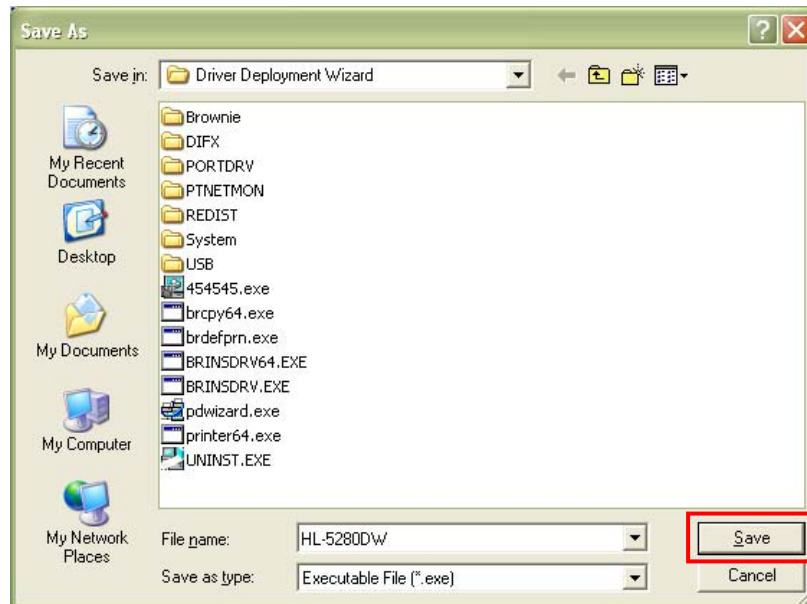


Once you have made your changes, click 'OK'.

**Step 22:** When you are made your configurations, click on 'Finish'.



**Step 23:** Give you new driver a name, select where you want it to go then click 'Save'.



**Step 24:** Your new driver will be created. To use, simply connect the printer to your computer and double-click the newly created executable file. That's it!



## 5: How to use a DDW created driver in up to 3 easy steps

**Step 1:** If you are installing a device with a parallel connection, connect the parallel cable to both you computer and printer first, if not go to step 2.

**Step 2:** Double-click the executable file and wait for the drivers to be installed. For network and parallel printers, that its!



**Step 3:** For USB connections, wait for the driver to install and then connect your USB cable. Windows® should shortly announce that your new hardware is ready to be used.

## 6: Compatible operating systems

- Windows® 2000
- Windows® XP Home/Professional
- Windows® XP Professional x64 Edition
- Windows Vista®
- Windows Vista® x64 Edition
- Windows Server® 2003
- Windows Server® 2003 x64 Edition