



Brother's Customer Driver Install

Last Updated: 18th August 2008
Author: James Evans (BIE P&S Product Planning)



Contents

1: Basic overview.....	1
2: Customer benefits	2
3: Brother's custom driver install in practice	2
4: How to create a custom driver (Windows [®] XP & Vista [®])	2

1: Basic overview

In less than a minute, Brother gives you the ability to develop your very own customised printer drivers which have the potential to be rolled out to a whole fleet of users. It is just one of many utilities which Brother has created to make your daily business operations easier.

2: Customer benefits

- Spend less time configuring and more time on other important tasks
- Not only is it effective, but it is easy. Create your own Customised drivers effortlessly
- It is completely safe and secure

3: Brother's custom driver install in practice

For identification purposes, workers from a busy call centre automatically have their names printed onto every document they print. This is performed through another one of Brother's features called ID Print, which is embedded into the driver but is not enabled by default. Thanks to Brother's custom driver install the companies IT department was able to create a new driver where ID print was enabled by default. This meant that it was immediately ready after installation, with no additional configuration.

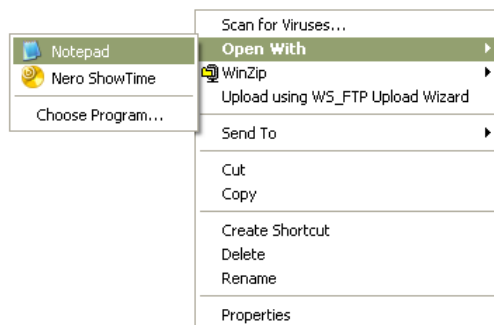
4: How to create a custom driver (Windows® XP & Vista®)

The driver must already be installed on your computer. This is because you will be modifying one of the installation files, which is compressed in its original format and as such is un-editable. The following instructions explain where you can find this file and how you need to modify it.

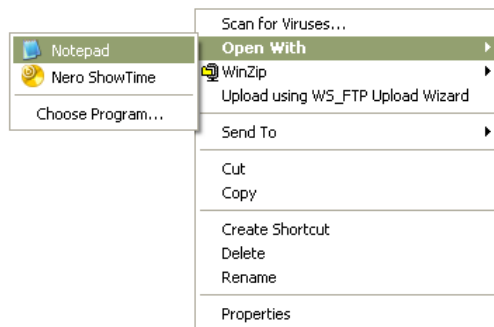
Step 1: Navigate to the following folder:

`\system32\spool\drivers\w32x86\3`. By default this is found within 'C:\windows'.

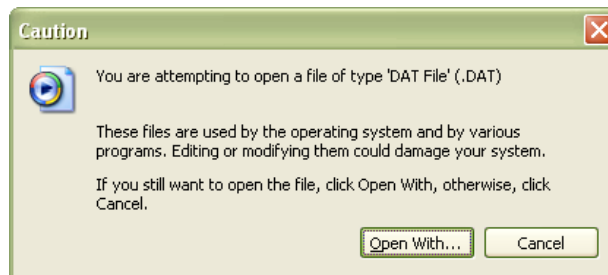
Step 2: In this folder you will a file called 'bexxxx.dat' (where xxxx is the model name, for example "be9045.dat"). Right-click this file and hover your mouse over 'Open with'.



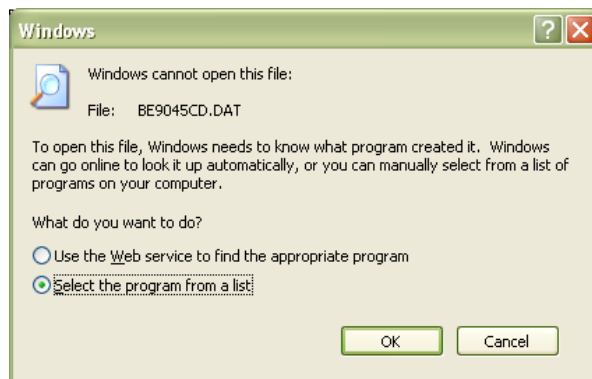
Step 3: If it appears, left-click **'Notepad'** and proceed to step 7 on page 4 otherwise left-click **'Choose Program'**.



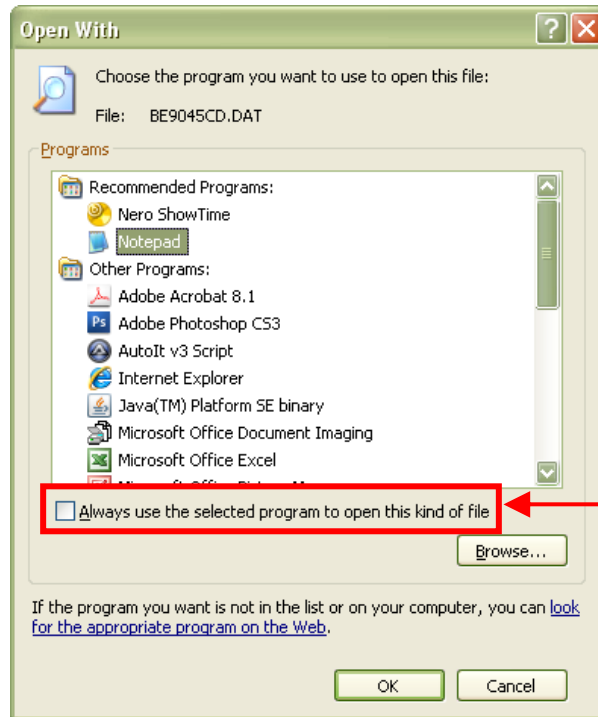
Step 4: Click the **'Open With...'** button if this caution message appears.



Step 5: Select the **'Select the program from a list'** selection box and click **'OK'**.

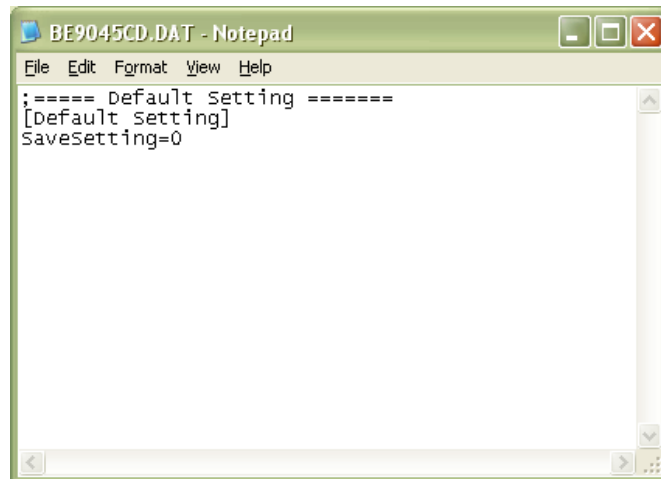


Step 6: From the list of applications click **'Notepad'** which will highlight it, then click **'OK'**.



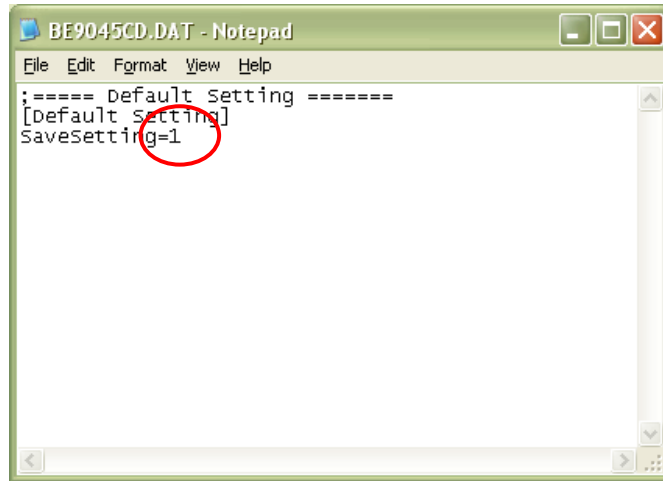
If this box is checked, Windows® will always associate '.DAT' files with Notepad. This means they will behave like a text file and open automatically in Notepad when double-clicked. To ensure this does not happen, un-tick this box.

Step 7: When the file opens, you will see the following:



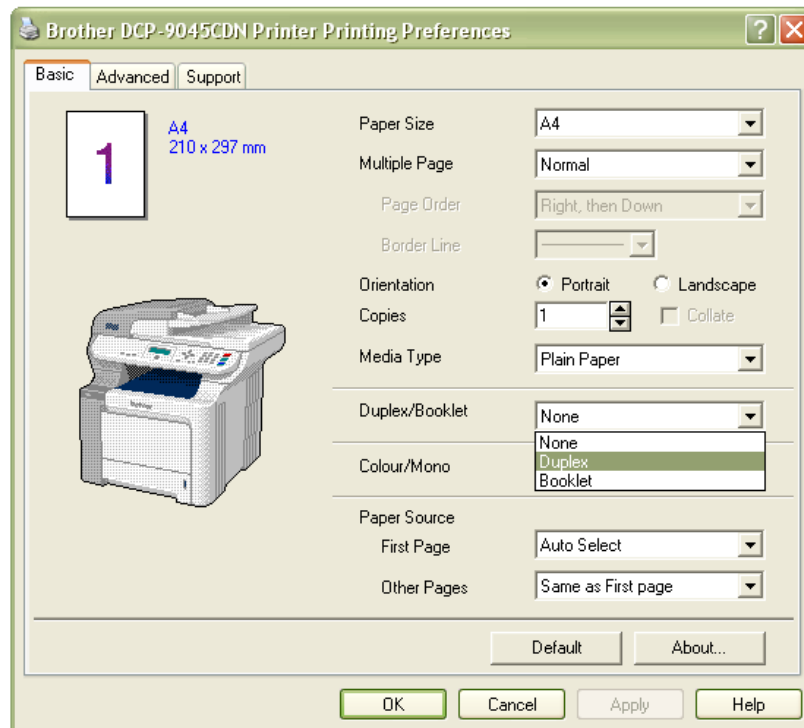
If the contents of this file look very different, you will need to close it, delete it and re-install the appropriate driver. This is because the file may already contain information about a previous configuration. Once in this state it cannot be re-modified to reflect any new settings.

Step 8: Now you need to edit the file, changing 'SaveSettings=0' to 'SaveSettings=1', then save and close.

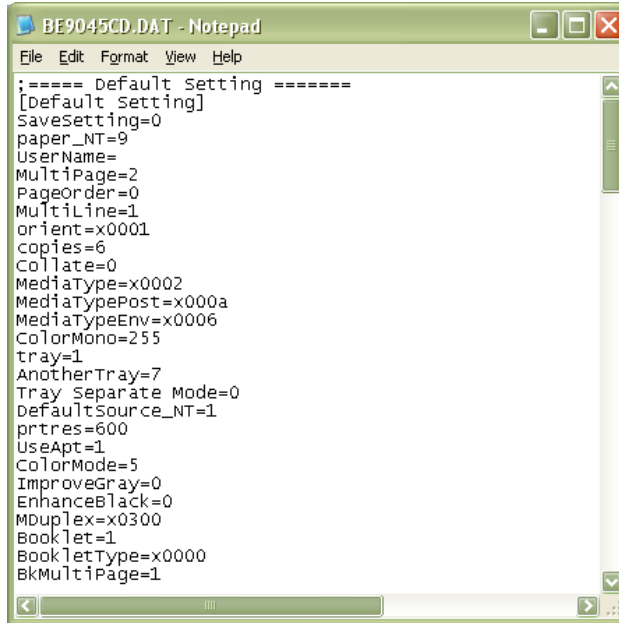


Step 9: Make a copy of the file you have just closed (bexxxx.dat', where xxx is the model name). The reason why you need to do this will be made clearer later on.

Step 10: Go into the printer properties driver and change some of the settings. In the example below duplex has been enabled on a DCP-9045CDN.

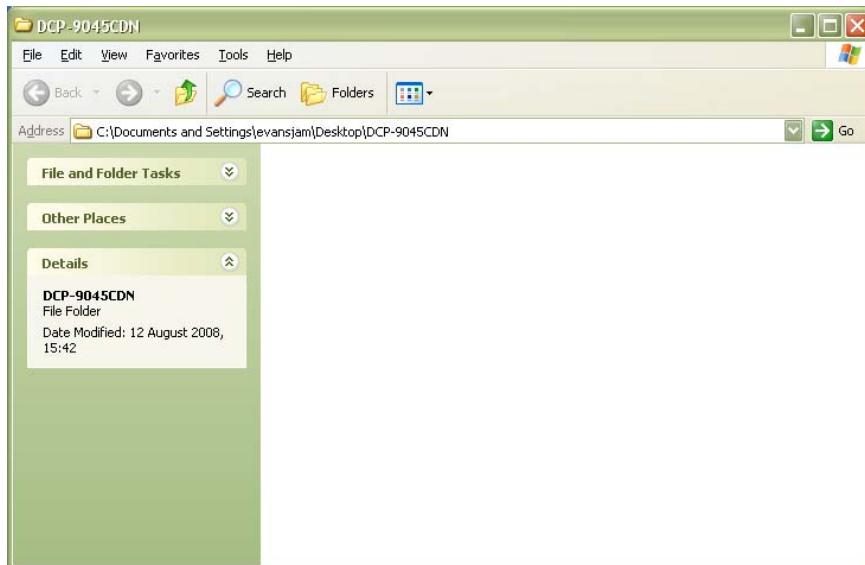


Step 11: Go back into the file 'bexxxx.dat' (where xxx is the model name) through Notepad. The file should now contain the entire driver setting information which you recently applied. *Please note that if you go back into the driver settings and make any new changes those new changes will not be applied to this file. If you want to apply new changes to this file, close and delete it, then replace it with the one you recently saved.*



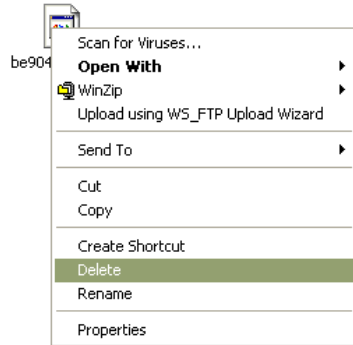
```
BE9045CD.DAT - Notepad
File Edit Format View Help
;==== Default Setting =====
[default setting]
Savesetting=0
paper_NT=9
UserName=
MultiPage=2
PageOrder=0
MultiLine=1
orient=x0001
copies=6
Collate=0
MediaType=x0002
MediaTypePost=x000a
MediaTypeEnv=x0006
ColorMono=255
Tray=1
AnotherTray=7
Tray Separate Mode=0
DefaultSource_NT=1
prtres=600
UseApt=1
ColorMode=5
ImproveGray=0
EnhanceBlack=0
MDuplex=x0300
Booklet=1
BookletType=x0000
BkMultiPage=1
```

Step 12: You can now build you own custom driver installation file. To do this, create a new folder and call it the make and model of your new printer driver.



Step 13: Copy the driver files over to that folder. It is recommended that you download the either the **'WHQL printer drivers'** or **'Printer driver only'** from Brother Solutions Centre and copy these files over to the folder you just created.

Step 14: In this folder you will see a file called **'bexxxx.da_'** (where xxx is the model name). This is a compressed .dat file. You will need to delete it.



Step 15: Now copy the **'bexxxx.dat'** file you recently created to the new folder and rename it from **'dat'** to **'da_'**.

Step 16: Install the printer driver, for example using Windows® **'Add Printer Wizard'**.

Step 17: When you go into printing preferences you will notice that your new settings have automatically been applied.